

TECHNICAL MANUAL

OPERATOR'S, ORGANIZATIONAL, DIRECT
SUPPORT, AND GENERAL SUPPORT
MAINTENANCE REPAIR PARTS AND
SPECIAL TOOLS LISTS
(INCLUDING DEPOT MAINTENANCE
REPAIR PARTS **AND SPECIAL TOOLS**)

FOR

SHELTERS, ELECTRICAL
EQUIPMENT

S-280A/G

(NSN 5410-00-999-6022)

AND

S-280 B/G

(NSN 5410-00-1 17-2868)

TECHNICAL MANUAL

No. 11-5410-213-14P }

HEADQUARTERS
DEPARTMENT OF THE ARMY
WASHINGTON, D.C., 21 April 1978

**OPERATOR'S, ORGANIZATIONAL, DIRECT SUPPORT, AND
GENERAL SUPPORT MAINTENANCE
REPAIR PARTS AND SPECIAL TOOLS LISTS
(INCLUDING DEPOT MAINTENANCE REPAIR PARTS AND SPECIAL
TOOLS)
FOR
SHELTERS. ELECTRICAL EQUIPMENT
S-280A/G (NSN 5410-00-999-6022)
AND
S-280B/G (NSN 5410-00-117-2868)**

Current as of 21 October 1977

REPORTING OF ERRORS

You can improve this manual by recommending improvements using DA Form 2028-2 (Test) located in the back of the manual. Simply tear out the self-addressed form, fill it out as shown on the sample, fold it where shown, and drop it in the mail.

If there are no blank DA Form 2028-2 (Test) in the back of your manual, use the standard DA Form 2028 (Recommended Changes to Publications and Blank Forms) and forward to the Commander, US Army Communication & Electronics Materiel Readiness Command, ATTN: DRSEL-MA-Q, Fort Monmouth, NJ 07703.

In either case a reply will be furnished direct to you.

Table of Contents

| | | | Page | Illus- Figure |
|----------|------|--|------|------------------|
| SECTION | I. | Introduction | 1 | |
| | II. | Repair parts list | 5 | |
| Group | 00. | Shelters, Electrical Equipment S-280A/G, S-280B/G. | 5 | 1-8 |
| | 01. | Door assembly | 5 | 9-17 |
| SECTION | III. | Special tools list (Not applicable) | | |
| | IV. | National stock number and part number index | 44 | |
| APPENDIX | A. | Components of end item list (Not applicable) | | |
| | B. | Additional authorization list (Not applicable) | | |
| | C. | Maintenance allocation | | |

● This manual supersedes TM 11-5410-213-14P, 24 September 1975.

TM 11-5410-213-14P

SECTION I. Introduction49

II. Maintenance allocation chart5 I

III. Tools and test equipment requirements 52

IV. Remarks53

APPENDIX D . Expendable supplies and materials list (Nonapplicable)

SECTION I INTRODUCTION

1. scope

This manual lists spares and repair parts; special tools; special test, measurement, and diagnostic equipment (TMDE), and other special support equipment required for performance of operator's, organizational, direct support, and general support maintenance of the S-280A/G and S-280B/G. It authorizes the requisitioning and issue of spares and repair parts as indicated by the source and maintenance codes.

2. General

This Repair Parts and Special Tools List is divided into the following sections:

a. *Section II. Repair Parts List.* A list of spares and repair parts authorized for use in the performance of maintenance. The list also includes parts which must be removed for replacement of the authorized parts. Parts lists are composed of functional groups in numeric sequence, with the parts in each group listed in figure and item number sequence.

b. *Section III. Special Tools List.* Not applicable.

c. *Section IV. National Stock Number and Part Number Index* A list, in National item identification number (NIIN) sequence, of all National stock numbers (NSN) appearing in the listing, followed by a list, in alphameric sequence, of all part numbers appearing in the listings. National stock numbers and part numbers are cross-referenced to each illustration figure and item number appearance.

3. Explanation of Columns

a. *Illustration.* This column is divided as follows:

(1) *Figure number.* Indicates the figure number of the illustration on which the item is shown.

(2) *Item number.* The number used to identify item called out in the illustration.

b. *Source, Maintenance, and Recoverability (SMR) Codes.*

(1) *Source code.* Source codes indicate the manner of acquiring support items for maintenance, repair, or overhaul of end items. Source codes are entered in the first and second positions of the Uniform SMR Code format as follows:

| Code | Definition |
|------|------------|
|------|------------|

| | |
|----|---|
| PA | Item procured and stocked for anticipated or known usage. |
|----|---|

Code

XD – A support item that is not stocked. When required, item will be procured through normal supply channels.

NOTE

Cannibalization or salvage may be used as a source of supply for any items source coded above except those coded XA and aircraft support items as restricted by AR 700-42.

(2) *Maintenance code.* Maintenance codes are assigned to indicate the levels of maintenance authorized to USE and REPAIR support items. The maintenance codes are entered in the third and fourth positions of the Uniform SMR Code format as follows:

(a) The maintenance code entered in the third position will indicate the lowest maintenance level authorized to remove, replace, and use the support item. The maintenance code entered in the third position will indicate one of the following levels of maintenance

| Code | Application/Explanation |
|------|-------------------------|
|------|-------------------------|

| | |
|---|--|
| O | Support item is removed, replaced, used at the organizational level. |
|---|--|

| | |
|---|--|
| F | Support item is removed, replaced, used at the direct support level. |
|---|--|

| | |
|---|---|
| H | Support item is removed, replaced, used at the general support level. |
|---|---|

(b) *The maintenance code entered in the fourth position indicates whether the item is to be repaired and identifies the lowest maintenance level with the capability to perform complete repair (i.e., all authorized maintenance functions). This position will contain one of the following maintenance codes:*

| Code | Application/Explanation |
|------|-------------------------|
|------|-------------------------|

| | |
|---|--|
| F | The lowest maintenance level capable of complete repair of the support item is the direct support level. |
|---|--|

| | |
|---|---|
| H | The lowest maintenance level capable of complete repair of the support item is the general support level. |
|---|---|

| | |
|---|--|
| Z | Nonreparable. No repair is authorized. |
|---|--|

(3) *Recoverability code.* Recoverability codes are assigned to support items to indicate the disposition action on unserviceable items. The recoverability code is entered in the fifth position of the Uniform SMR Code format as follows:

Recoverability
codes

Definition

Z—Nonreparable item. When unserviceable, condemn and dispose at the level indicated in position 3.

F—Reparable item. When uneconomically reparable, condemn and dispose at the direct Support level.

H—Reparable item. When uneconomically reparable, condemn and dispose at the general support level.

c. *National Stock Number.* Indicates the National stock number assigned to the item and will be used for requisitioning purposes.

d. *Part Number.* Indicates the primary number used by the manufacturer (individual, company, firm, corporation, or Government activity), which controls the design and characteristics of the item by means of its engineering drawings, specifications, standards, and inspection requirements to identify an item or range of items.

NOTE

When a stock numbered item is requisitioned the repair part received may have a different part number than the part being replaced.

e. *Federal Supply Code for Manufacturer (FSCM).* The FSCM is a 5-digit numeric code listed in SB 708-42 which is used to identify the manufacturer, distributor, or Government agency, etc.

f. *Description* Indicates the Federal item name and, if required, a minimum description to identify the item.

g. *Unit of Measure (U/M)* Indicates the standard of the basic quantity of the listed item as used in performing the actual maintenance function. This measure is expressed by a two-character alphabetical abbreviation (e.g., ea, in, pr, etc). When the unit of measure differs from the unit of issue, the lowest unit of issue that will satisfy the required units of measure will be requisitioned.

h. *Quantity Incorporated in Unit.* Indicates the quantity of the item used in the breakout shown on

the illustration figure, which is prepared for a functional group, subfunctional group, or an assembly.

4. *Special Information*

Usable on codes are shown in the description column. Uncoded items are applicable to all models. Identification of the usable on codes used in this publication are

| | |
|------|----------------|
| code | <i>Used on</i> |
| 3MN | S-280A/G |
| BMC | S-280B/G |

5. How to Locate Repair Parts

a. When National stock number or part number is unknown.

(1) *First.* Using the table of contents, determine the functional group within which the item belongs. This is necessary since illustrations are prepared for functional groups and listings are divided into the same groups.

(2) *Second* Find the illustration covering the functional group to which the item belongs.

(3) *Third* Identify the item on the illustration and note the illustration figure and item number of the item.

(4) *Fourth.* Using the Repair Parts Listing, find the figure and item number noted on the illustration.

b. *When* National stock number or part number is known.

(1) *First.* Using the Index of National Stock Numbers and Part Numbers, find the pertinent National stock number or part number. This index is in NIIN sequence followed by a list of part numbers in alphameric sequence, cross-referenced to the illustration figure number and item number.

(2) *Second* After finding the figure and item number, locate the figure and item number in the repair parts list.

6. Abbreviations

Not applicable.

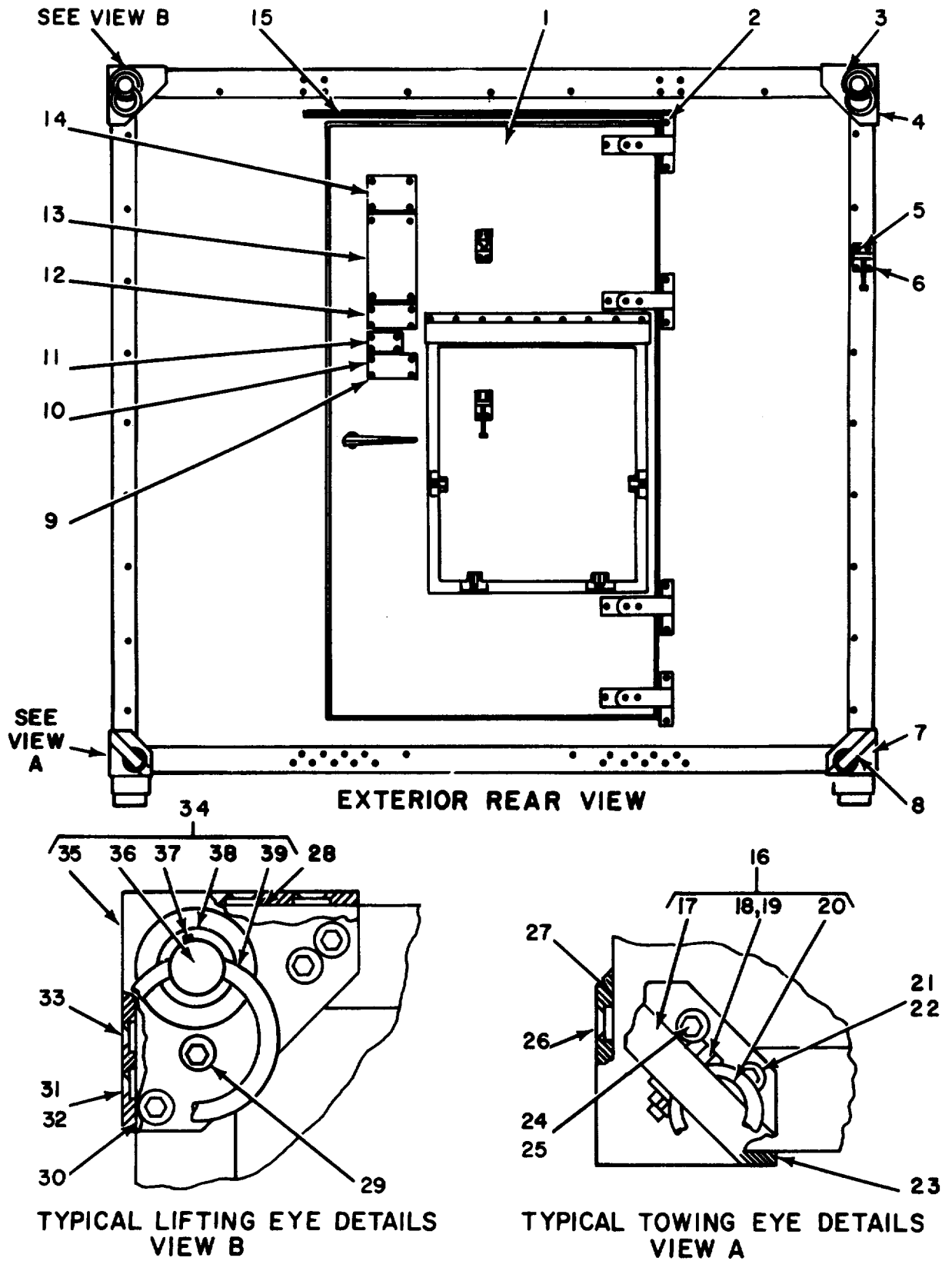


Figure 1. Shelters, Electrical Equipment S-280A/G and S-280/G

| SECTION II | | | | | | TM11-5410-213-14P | | | (7) | (8) |
|---|------|----------|------------------|----------------|-------------|--|-----|-----|------|-----|
| (1) | (2) | (3) | (4) | (5) | (6) | | | | | |
| ILLUSTRATION | | | | | | | | | | |
| (A) | (B) | NATIONAL | | | DESCRIPTION | | | | QTY | |
| FIG | ITEM | STOCK | PART | FSCM | | USABLE ON CODE | | | INC | |
| NO. | NO. | NUMBER | NUMBER | | | | U/M | | IN | |
| | | | | | | | | | UNIT | |
| GROUP 00 SHELTERS, ELECTRICAL EQUIPMENT | | | | | | | | | | |
| S-280A/G AND S-280B/G | | | | | | | | | | |
| 1 | 1 | PAFHH | 5410-00-407-4953 | SMD450461 | 80063 | DOOR ASSEMBLY | | BMC | EA | 1 |
| 1 | 1 | XDFHH | | SMD555531 | 80063 | DOOR ASSEMBLY | | 3MN | EA | 1 |
| 1 | 2 | PAHZZ | 5320-00-874-4471 | AD45H | 7707 | RIVET, BLIND USED ON S-280B/G CONTRACT DAAB05-69-C-0114 (MAGLINE) ONLY | | BMC | EA | 7 |
| 1 | 2 | PAHZZ | 5320-00-582-3494 | MS20600AD4W4 | 96906 | RIVET, BLIND USED ONLY ON S-280A/G AND THE DAAB05-67-C-2509 (EMC) CONTRACT VERSION OF THE S-280B/G MODELS | | | EA | 7 |
| 1 | 3 | PAFFF | 2540-00-937-0326 | SMD555537GRII | 80063 | LIFTING EYE ASSEMBLY | | | EA | 1 |
| 1 | 4 | PAFZZ | 3040-00-919-5154 | SMD555536-2 | 80063 | BRACKET, EYE, ROTATING | | | EA | 1 |
| 1 | 5 | PAHZZ | 5340-00-928-8999 | SMB555598-1 | 80063 | T-LATCH ASSEMBLY, LOUVER COVER | | | EA | 1 |
| 1 | 6 | PAHZZ | 5320-00-874-4470 | AD68H | 7707 | RIVET, BLIND USED ONLY ON S-280A/G AND THE DAAB05-67-C-2509 (EMC) CONTRACT VERSION OF THE S-280B/G MODELS | | | EA | 4 |
| 1 | 6 | PAHZZ | 5320-00-813-4144 | MS20600AD6W7 | 96906 | RIVET, BLIND | | 3MN | EA | 4 |
| 1 | 7 | XDFFF | | SMD317088GRIII | 80063 | TOWING EYE ASSEMBLY | | | EA | 1 |
| 1 | 8 | XDFZZ | | SMD317087-3 | 80063 | FITTING | | | EA | 1 |
| 1 | 9 | PAHZZ | 5320-00-582-3304 | MS20600AD4W2 | 96906 | RIVFT, BLIND | | | EA | 24 |
| 1 | 10 | XDHZZ | | SMB317089 | 80063 | PLATE, PAINT, INSTRUCTION | | | EA | 1 |
| 1 | 11 | XDHZZ | | SMB340031 | 80063 | PLATE, AIRBORNE INSTRUCTION | | | EA | 1 |
| 1 | 12 | XDHZZ | | SMB165463 | 80063 | NAMEPLATE | | | EA | 1 |
| 1 | 13 | XDHZZ | | SMC165466 | 80063 | PLATE, TRANSPORTATION | | | EA | 1 |
| 1 | 14 | XDHZZ | | SMB555555 | 80063 | PLATE, DATA, AIRCRAFT LOADING | | | EA | 1 |
| 1 | 15 | XDFZZ | | SMB165303 | 80063 | DRIP MOLD, DOOR | | | EA | 1 |
| 1 | 16 | PAFFF | 2540-00-914-8962 | SMD317088GRIV | 80063 | TOWING EYE ASSEMBLY | | | EA | 1 |
| 1 | 17 | PAFZZ | 3040-00-919-5001 | SMD317087-4 | 80063 | BRACKET, EYE, ROTATING | | | EA | 1 |
| 1 | 18 | PAFZZ | 5306-00-584-4911 | AN7C22A | 88044 | BOLT, HEXAGON HEAD | | | EA | 1 |
| 1 | 19 | PAFZZ | 5310-00-088-0552 | MS21044N7 | 96906 | NUT, SELF-LOCKING | | | EA | 1 |
| 1 | 20 | PAFZZ | 3940-00-933-4474 | SMB165462 | 80063 | EYE, TOWING | | | EA | 1 |
| 1 | 21 | PAFZZ | 5305-00-717-5467 | MS35307-362 | 96906 | SCREW, HEXAGON HEAD USED ON S-280B/G CONTRACT DAAB05-69-C-0114 (MAGLINE) ONLY | | BMC | EA | 8 |
| 1 | 21 | PAFZZ | 5305-00-208-1429 | MS35307-363 | 96906 | SCREW, HEXAGON HEAD USED ONLY ON S-280A/G AND THE DAAB05-67-C-2509 (FMC) CONTRACT VERSION OF THE S-280B/G MODELS | | | EA | 12 |
| 1 | 22 | PAFZZ | 5310-00-984-7042 | MS35338-141 | 96906 | WASHER, LOCK USED ON S-280B/G CONTRACT DAAB05-69-C-0114 (MAGLINE) ONLY | | BMC | EA | 12 |
| 1 | 22 | PAFZZ | 5310-00-637-9541 | MS35338-46 | 96906 | WASHER, LOCK USED ONLY ON S-280A/G AND THE DAAB05-67-C-2509 (EMC) CONTRACT VERSION OF THE S-280B/G MODELS | | | EA | 12 |
| 1 | 23 | PAFZZ | 5365-00-001-4731 | SMB165483-3 | 80063 | SPACER, PLATE | | | EA | 2 |
| 1 | 24 | PAFZZ | 5310-00-929-6449 | S37B285 | 3481 | RIVNUT | | | EA | 33 |
| 1 | 25 | PAFZZ | 5305-00-021-3740 | MS35307-364 | 96906 | SCREW, HEXAGON HEAD USED ONLY ON S-280A/G AND THE DAAB05-67-C-2509 (EMC) CONTRACT VERSION OF THE S-280B/G MODELS | | | EA | 4 |
| 1 | 26 | PAFZZ | 5305-00-934-0198 | SMB555568-1 | 80063 | SCREW, CAP, FLAT HEAD | | | EA | 10 |
| 1 | 27 | XDFZZ | | SMB165483-4 | 80063 | SHIM, FITTING | | | EA | 2 |
| 1 | 28 | PAFZZ | 5365-00-001-4733 | SMB165483-1 | 80063 | SHIM, FITTING | | | EA | 2 |

| SECTION II | | | | | | TM11-5410-213-14P | | |
|--------------|------|----------|------------------|--------------|-------------|--|------|----|
| (1) | (2) | (3) | (4) | (5) | (6) | (7) | (8) | |
| ILLUSTRATION | | | | | | | | |
| (A) | (B) | NATIONAL | | | DESCRIPTION | | QTY | |
| FIG | ITEM | STOCK | PART | | | USABLE ON CODE | INC | |
| NO. | NO. | NUMBER | NUMBER | FSCM | | | IN | |
| | | | | | | | U/M | |
| | | | | | | | UNIT | |
| 1 | 29 | PAFZZ | 5310-00-595-6057 | MS15795-815 | 96906 | WASHER,FLAT USED ON S-280B/G CONTRACT DAAB05-69-C-0114(MAGLINE)ONLY BMC | EA | 12 |
| 1 | 29 | PAFZZ | 5310-00-809-4061 | MS27183-15 | 96906 | WASHER,FLAT USED ONLY ON S-280A/G AND THE DAAB05-67-C 2509(EMC)CONTRACT VERSION OF THE S-280B/G MODELS | EA | 12 |
| 1 | 30 | PAFZZ | 5365-00-020-6591 | SMB165483-2 | 80063 | SPACER,PLATE | EA | 2 |
| 1 | 31 | PAFZZ | 5305-00-938-4012 | SMB555568-3 | 80063 | SCREW,FLAT HEAD | EA | 11 |
| 1 | 32 | PAFZZ | 5310-00-413-4935 | S37B115 | 3481 | RIVNUT | EA | 4 |
| 1 | 33 | PAFZZ | 5305-00-934-0196 | SMB555568-2 | 80063 | SCREW,FLAT HEAD | EA | 18 |
| 1 | 34 | PAFFF | 2540-00-937-0325 | SMD555537GRI | 80063 | LIFTING EYE ASSEMBLY | EA | 1 |
| 1 | 35 | XDFZZ | | SMD555536-1 | 80063 | CASTING,LIFT EYE | EA | 1 |
| 1 | 36 | PAFZZ | 5315-00-933-4976 | SMC555548 | 80063 | PIN,SWIVEL | EA | 1 |
| 1 | 37 | PAFZZ | 5305-00-753-4451 | MS51021-42 | 96906 | SETSCREW | EA | 2 |
| 1 | 38 | PAFZZ | 5365-00-001-1944 | SMB555547 | 80063 | SPACER | EA | 1 |
| 1 | 39 | XDFZZ | | SMC555540 | 80063 | RING ASSEMBLY | EA | 1 |

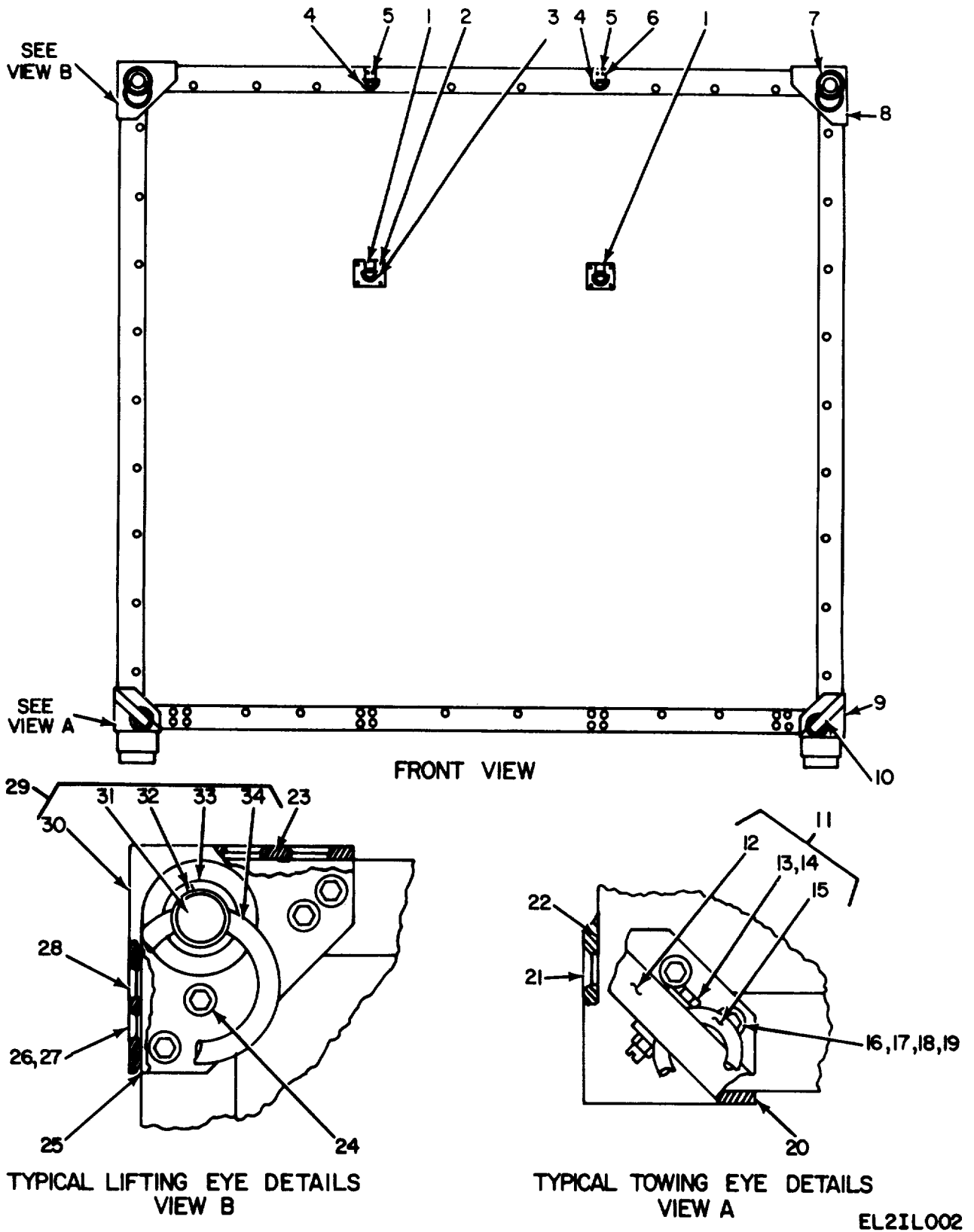
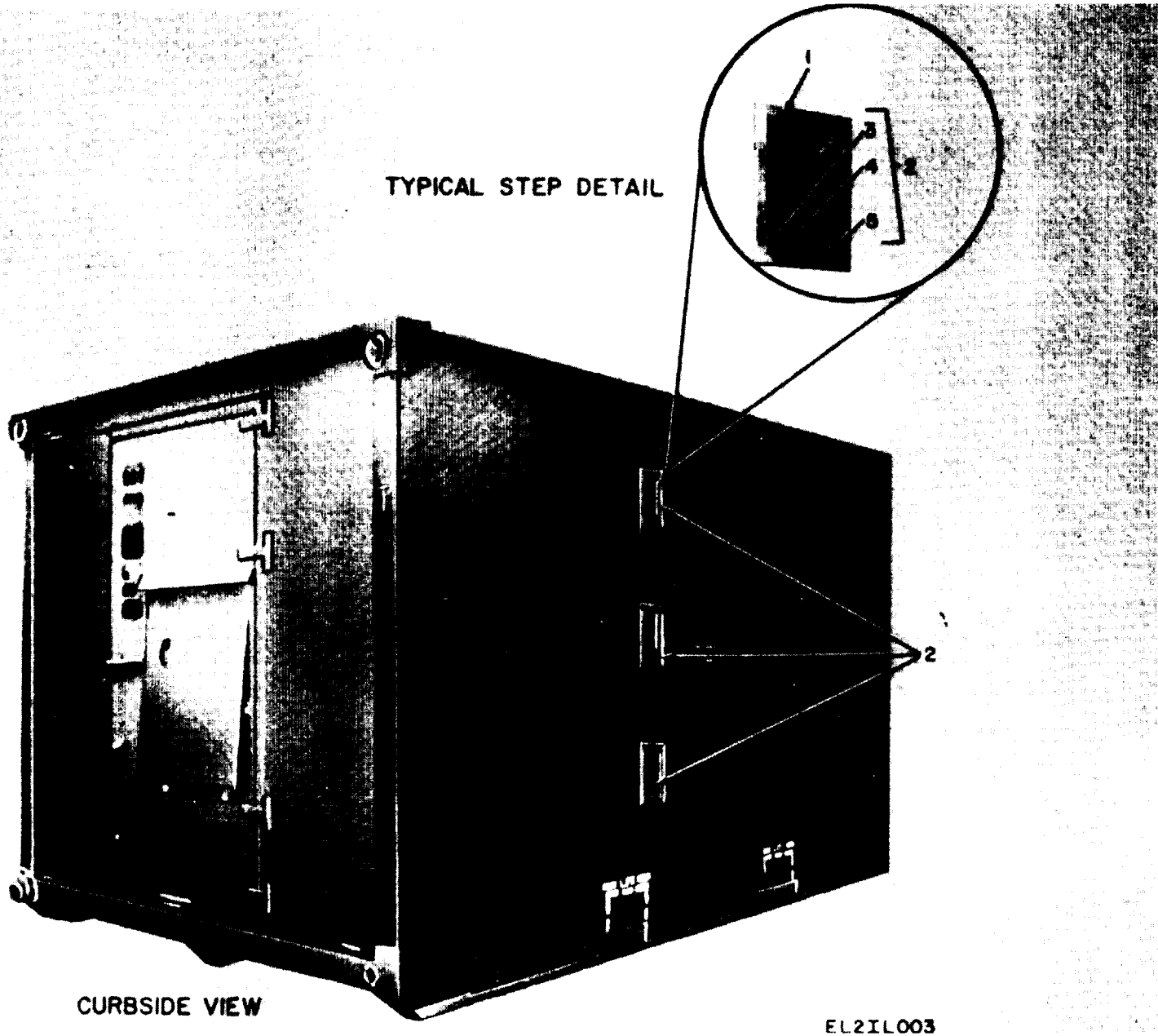


Figure 2. Shelters, Electrical Equipment S-280A/G and S-280B/G, Exterior View.

| SECTION II | | TM11-5410-213-14P | | | | | | |
|--------------|------|-------------------|------------------|---------------|-------------|--|------|----|
| (1) | (2) | (3) | (4) | (5) | (6) | (7) | (8) | |
| ILLUSTRATION | | | | | | | | |
| (A) | (B) | NATIONAL | PART | | DESCRIPTION | | QTY | |
| FIG | ITEM | STOCK | NUMBER | FSCM | | USABLE ON CODE | INC | |
| NO. | NO. | NUMBER | NUMBER | | | | IN | |
| | | | | | | | UNIT | |
| | | | | | | | | |
| 2 | 1 | XDFZZ | | SMB165332 | 80063 | D-RING ASSEMBLY | EA | 2 |
| 2 | 2 | PAFZZ | 5320-00-721-5387 | MS20600AD8W3 | 96906 | RIVET, BLIND | EA | 8 |
| 2 | 3 | PAFZZ | 5320-00-117-7288 | MS20426AD6-8 | 96906 | RIVET USED ON S-230B/G CONTRACT DAA5-69-C-0114 (MAGLINE) ONLY BMC | EA | 4 |
| 2 | 3 | PAFZZ | 5320-00-721-5385 | MS20600AD8W5 | 96906 | RIVET, BLIND USED ONLY ON S-280A/G AND THE DAAB05-67-C-2509 (EMC) CONTRACT VERSION OF THE S-280B/G MODELS | EA | 8 |
| 2 | 4 | XDFZZ | | SMB165399 | 80063 | D-RING | EA | 2 |
| 2 | 5 | XDFZZ | | SMB165331 | 80063 | CLAMP | EA | 2 |
| 2 | 6 | XDFZZ | | MS20000AD8W-6 | 96906 | RIVET | EA | 2 |
| 2 | 7 | PAFFF | 2540-00-933-4064 | SMD555537GR4 | 80063 | LIFTING EYE ASSEMBLY | EA | 1 |
| 2 | 8 | PAFZZ | 3040-00-919-5049 | SMD555536-4 | 80063 | CASTING, LIFT EYE | EA | 1 |
| 2 | 9 | PAFFF | 2540-00-916-6080 | SMD317088GRII | 80063 | TOWING EYE ASSEMBLY | EA | 1 |
| 2 | 10 | PAFZZ | 5340-00-937-1597 | SMD317087-2 | 80063 | BRACKET, EYE, ROTATING | EA | 1 |
| 2 | 11 | XDFFF | | SMD317088GRI | 80063 | TOWING EYE ASSEMBLY | EA | 1 |
| 2 | 12 | PAFZZ | 3040-00-919-5156 | SMD317087-1 | 80063 | BRACKET, EYE | EA | 1 |
| 2 | 13 | PAFZZ | 5306-00-584-4911 | AN7C22A | 88044 | BOLT, HEXAGON HEAD | EA | 1 |
| 2 | 14 | PAFZZ | 5310-00-088-0552 | MS21044N7 | 96906 | NUT, SELF-LOCKING | EA | 1 |
| 2 | 15 | PAFZZ | 3940-00-933-4474 | SMB165462 | 80063 | EYE, TOWING | EA | 1 |
| 2 | 16 | PARZZ | 5310-00-721-5414 | S37B285 | 3481 | RIVNUT | EA | 40 |
| 2 | 17 | PAFZZ | 5310-00-595-6057 | MS15795-815 | 96906 | WASHER, FLAT USED ON S-280B/G CONTRACT DAAB05-69-C-0114 (MAGLINE) ONLY BMC | EA | 12 |
| 2 | 17 | PAFZZ | 5310-00-809-4061 | MS27183-15 | 96906 | WASHER, FLAT USED ONLY ON S-280A/G AND THE DAAB05-67-C-2509 (EMC) CONTRACT VERSION OF THE S-280B/G MODELS | EA | 12 |
| 2 | 18 | PAFZZ | 5305-00-021-3740 | MS35307-364 | 96906 | SCREW, HEXAGON HEAD | EA | 4 |
| 2 | 19 | PAFZZ | 5310-00-984-7042 | MS35338-141 | 96906 | WASHER, LOCK USED ON S-280B/G CONTRACT DAAB05-69-C-0114 (MAGLINE) ONLY BMC | EA | 12 |
| 2 | 19 | PAFZZ | 5310-00-637-9541 | MS35338-46 | 96906 | WASHER, LOCK USED ONLY ON S-280A/G AND THE DAAB05-67-C-2509 (EMC) CONTRACT VERSION OF THE S-280B/G MODELS | EA | 12 |
| 2 | 20 | PAFZZ | 5365-00-001-4731 | SMB165483-3 | 80063 | SPACER, PLATE | EA | 2 |
| 2 | 21 | PAFZZ | 5305-00-934-0198 | SMB555568-1 | 80063 | SCREW, FLAT HEAD | EA | 10 |
| 2 | 22 | XDFZZ | | SMB165483-4 | 80063 | SHIM, FITTING | EA | 2 |
| 2 | 23 | PAFZZ | 5365-00-001-4733 | SMB165483-1 | 80063 | SHIM, FITTING | EA | 2 |
| 2 | 24 | PAFZZ | 5305-00-717-5467 | MS35307-362 | 96906 | SCREW, HEXAGON HEAD USED ON S-280B/G CONTRACT DAAB05-69-C-0114 (MAGLINE) ONLY BMC | EA | 10 |
| 2 | 24 | PAFZZ | 5305-00-208-1429 | MS35307-363 | 96906 | SCREW, HEXAGON HEAD USED ONLY ON S-280A/G AND THE DAAB05-67-C-2509 (EMC) CONTRACT VERSION OF THE S-280B/G MODELS | EA | 12 |
| 2 | 25 | PAFZZ | 5365-00-020-6591 | SMB165483-2 | 80063 | SPACER, PLATE | EA | 2 |
| 2 | 26 | PAFZZ | 5305-00-938-4012 | SMB555563-3 | 80063 | SCREW, FLAT HEAD | EA | 4 |
| 2 | 27 | PAFZZ | 5310-00-413-4935 | S37B115 | 3481 | RIVNUT | EA | 4 |
| 2 | 28 | PAFZZ | 5305-00-934-0196 | SMB555568-2 | 80063 | SCREW, FLAT HEAD | EA | 18 |
| 2 | 29 | PAFFF | 5410-00-933-0849 | SMD555537GR3 | 80063 | LIFTING EYE ASSEMBLY | EA | 1 |
| 2 | 30 | XDHZZ | | SMD555536-3 | 80063 | CASTING, LIFT EYE | EA | 1 |
| 2 | 31 | PAFZZ | 5315-00-933-4976 | SMC555548 | 80063 | PIN, SWIVEL | EA | 1 |
| 2 | 32 | PAFZZ | 5305-00-753-4451 | MS51021-42 | 96906 | SETScrew | EA | 2 |

| SECTION II | | TM11-5410-213-14P | | | | | | |
|--------------|------|-------------------|------------------|-----------|-------|----------------|-----|---|
| (1) | (2) | (3) | (4) | (5) | (6) | (7) | (8) | |
| ILLUSTRATION | | | | | | | | |
| (A) | (B) | | NATIONAL | PART | | DESCRIPTION | | |
| FIG | ITEM | SMR | STOCK | NUMBER | FSCM | USABLE ON CODE | U/M | |
| NO. | NO. | CODE | NUMBER | NUMBER | | | | |
| 2 | 33 | PAFZZ | 5365-00-001-1944 | SMB555547 | 80063 | SPACER | EA | 1 |
| 2 | 34 | PAFZZ | 5410-00-927-1197 | SMC555540 | 80063 | RING ASSEMBLY | EA | 1 |



CURBSIDE VIEW

EL2IL003

Figure 3. Shelters, Electrical Equipment S-280A/G and S-280B/G, Exterior Rear View.

| SECTION II | | | | | | TM11-5410-213-14P | | | |
|--------------|------|----------|------------------|---------------|-------------|--|-----|------|----|
| (1) | (2) | (3) | (4) | (5) | (6) | | (7) | (8) | |
| ILLUSTRATION | | | | | | | | | |
| (A) | (B) | NATIONAL | | | DESCRIPTION | | | QTY | |
| FIG | ITEM | STOCK | PART | FSCM | | USABLE ON CODE | U/M | INC | |
| NO. | NO. | NUMBER | NUMBER | | | | | IN | |
| | | | | | | | | UNIT | |
| 3 | 1 | PAFZZ | 5320-00-952-4159 | AD64S | 7707 | RIVET,BLIND USED ON S-280B/G CONTRACT DAAB05-69-C-0114(MAGLINE) ONLY | BMC | EA | 30 |
| 3 | 1 | PAFZZ | 5320-00-721-5387 | MS20600AD8W3 | 96906 | RIVET,BLIND USED ON CONTRACT DAAB05-67-C-2509(EMC) ONLY | BMC | EA | 21 |
| 3 | 1 | PAFZZ | 5320-00-721-5386 | MS20600AD8W4 | 96906 | RIVET,BLIND | 3MN | EA | 9 |
| 3 | 2 | XDFHH | | SMD555567 | 80063 | STEP AND PAN ASSEMBLY | | EA | 3 |
| 3 | 3 | PAFZZ | 5410-00-919-4958 | 1-575709-50 | 19220 | STEP | | EA | 1 |
| 3 | 4 | PAFZZ | 5310-00-139-7357 | 15949 | 19220 | NUT, LOCKING | | EA | 2 |
| 3 | 5 | XDHZZ | | 914361 | 83205 | PAN, RECESSED OR | | EA | 1 |
| 3 | 5 | XDHZZ | | AL4-575709-50 | 19220 | PAN, RECESSED | | EA | 1 |

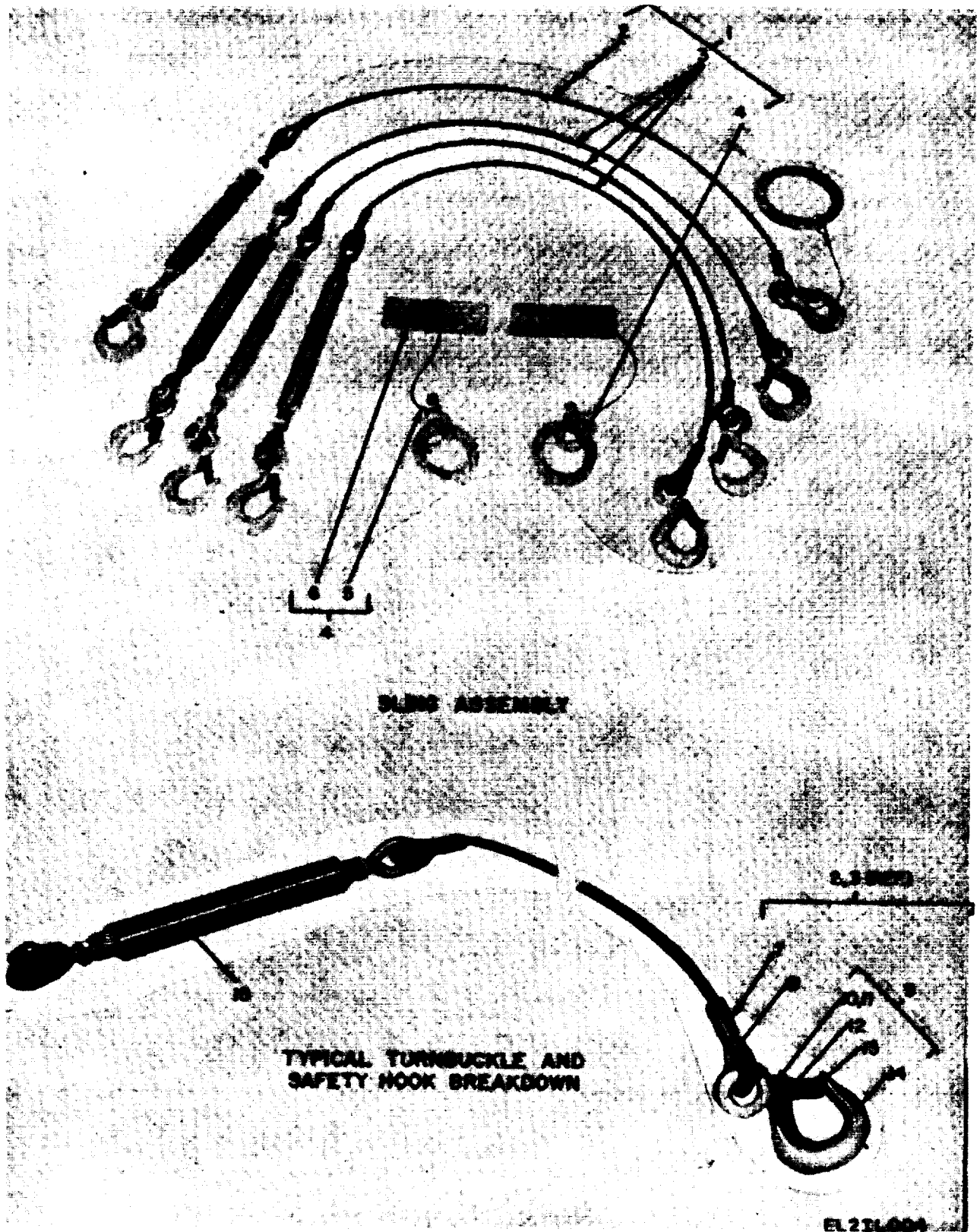


Figure 4. Shelters, Electrical Equipment S-280A/G and S-280B/G, Lifting and Tiedown Sling.

| SECTION II | | | | | | TM11-5410-213-14P | | |
|--------------|------|------------------------|--------------|-------|----------------------------------|-------------------|------|--|
| (1) | (2) | (3) | (4) | (5) | (6) | (7) | (8) | |
| ILLUSTRATION | | | | | | | | |
| (A) | (B) | NATIONAL | | | DESCRIPTION | | QTY | |
| FIG | ITEM | STOCK | PART | FSCM | | USABLE ON CODE | INC | |
| NO. | NO. | NUMBER | NUMBER | | | | IN | |
| | | | | | | | UNIT | |
| | | | | | | | | |
| 4 | 1 | PAOHH 3940-00-846-9858 | SCD36423 | 80063 | SLING, MULTIPLE LEG | | EA 1 | |
| 4 | 2 | PAOHH 5410-00-403-9535 | SCC36424GR11 | 80063 | WIRE ROPE ASSEMBLY AND LIFT RING | | EA 1 | |
| 4 | 3 | XDOHH | SCC36424GR1 | 80063 | WIRE ROPE ASSEMBLY | | EA 3 | |
| 4 | 4 | PAOHH 4030-00-956-5820 | SCC90674 | 80063 | PLATE AND RING ASSEMBLY | | EA 2 | |
| 4 | 5 | PAHZZ 4030-00-431-5536 | 28-1C | 76691 | SLEEVE | | EA 2 | |
| 4 | 6 | XDHZZ | SCC90676 | 80063 | PLATE | | EA 1 | |
| 4 | 7 | PAHZZ 4030-00-445-6210 | 28-23H5 | 76691 | SLEEVE | | EA 2 | |
| 4 | 8 | XDHZZ | SCC36424-6 | 80063 | THIMBLE | | EA 2 | |
| 4 | 9 | XDHHH | SCC351470 | 80063 | SAFETY HOOK ASSEMBLY | | EA 2 | |
| 4 | 10 | PAHZZ 5305-00-464-1740 | SCB351474 | 80063 | SCREW, MACHINE | | EA 1 | |
| 4 | 11 | PAHZZ 5310-00-982-4999 | MS21044C04 | 96906 | NUT | | EA 1 | |
| 4 | 12 | XDHZZ | SCC351473 | 80063 | SPRING | | EA 1 | |
| 4 | 13 | PAHZZ 5340-00-457-0579 | SCC351472 | 80063 | KEEPER | | EA 1 | |
| 4 | 14 | XDHZZ | SCC351471 | 80063 | HOOK | | EA 1 | |
| 4 | 15 | XDHZZ | SCC36424-5 | 80063 | TURNBUCKLE | | EA 1 | |

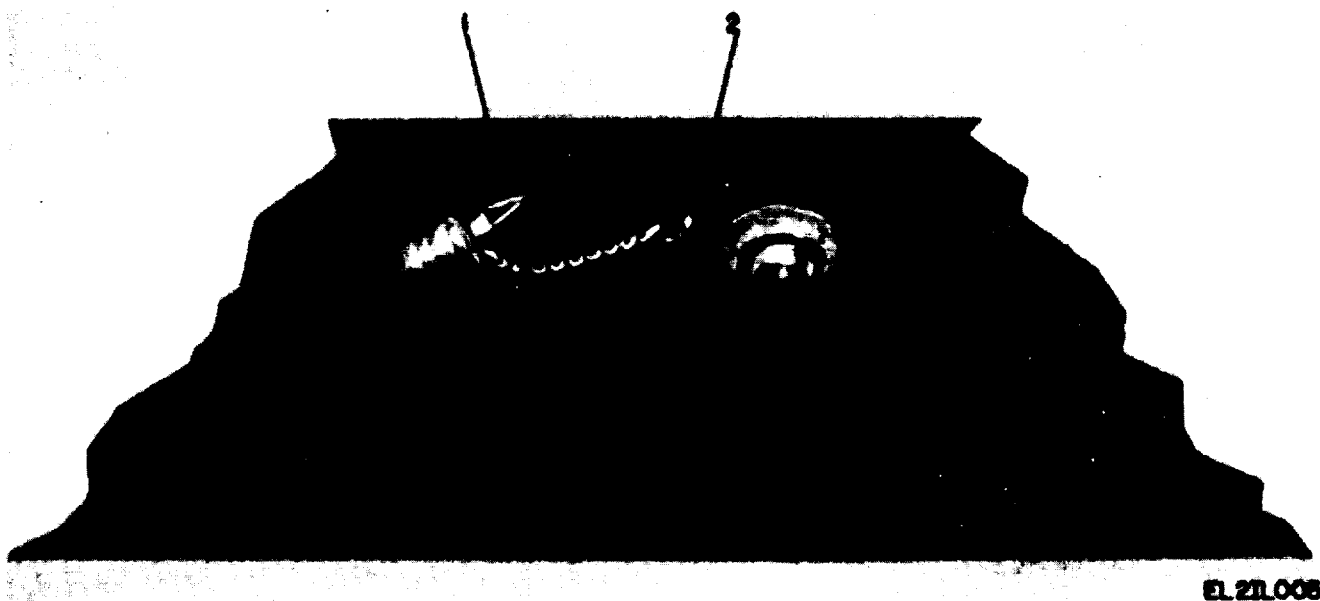
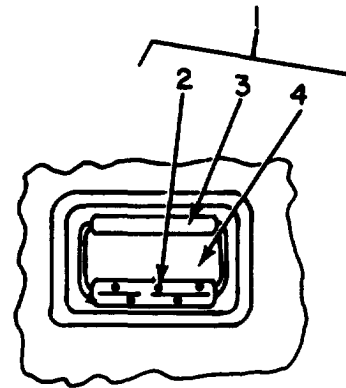
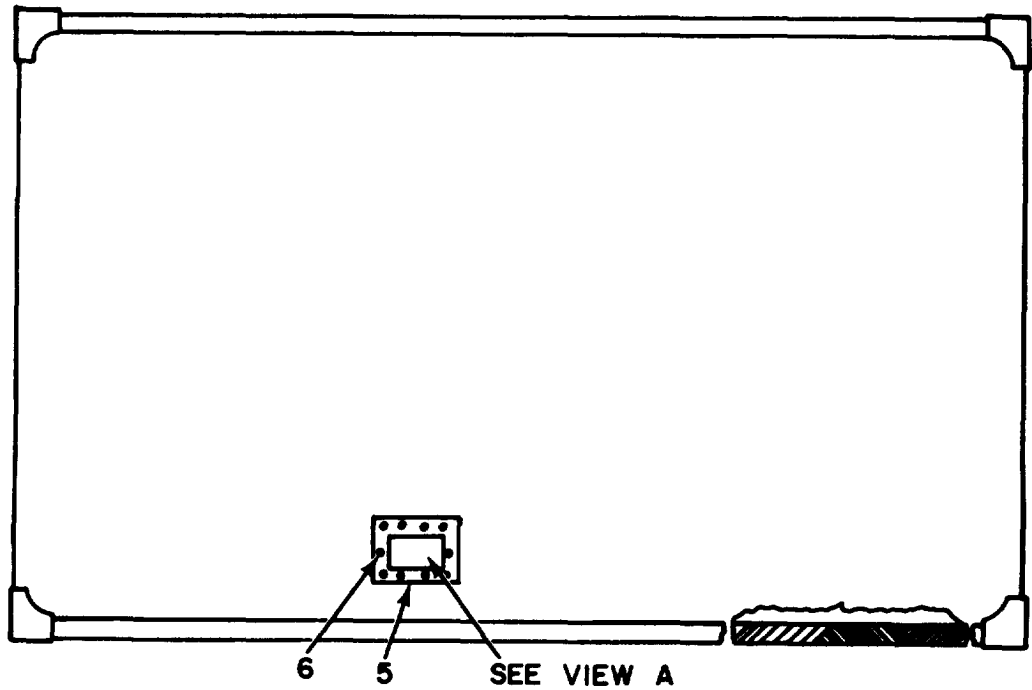


Figure 5. Shelters, Electrical Equipment S-280A/G and S-280B/G, Drain Plug, RFI Shielded.

| SECTION II | | | | | | TM11-5410-213-14P | | | |
|--------------|------|----------|------------------|-------------|-------------|-------------------|-----|------|---|
| (1) | (2) | (3) | (4) | (5) | (6) | | (7) | (8) | |
| ILLUSTRATION | | | | | | | | | |
| (A) | (B) | NATIONAL | | | DESCRIPTION | | | QTY | |
| FIG | ITEM | STOCK | PART | | | | | INC | |
| NO. | NO. | CODE | NUMBER | NUMBER | FSCM | USABLE ON CODE | U/M | IN | |
| | | | | | | | | UNIT | |
| 5 | 1 | PAOZZ | 4510-00-933-9953 | SMB165462 | 80063 | PLUG,DRAIN | | EA | 1 |
| 5 | 2 | PAOZZ | 5305-00-014-9247 | MS35494-131 | 96906 | SCREW,WOOD | | EA | 1 |



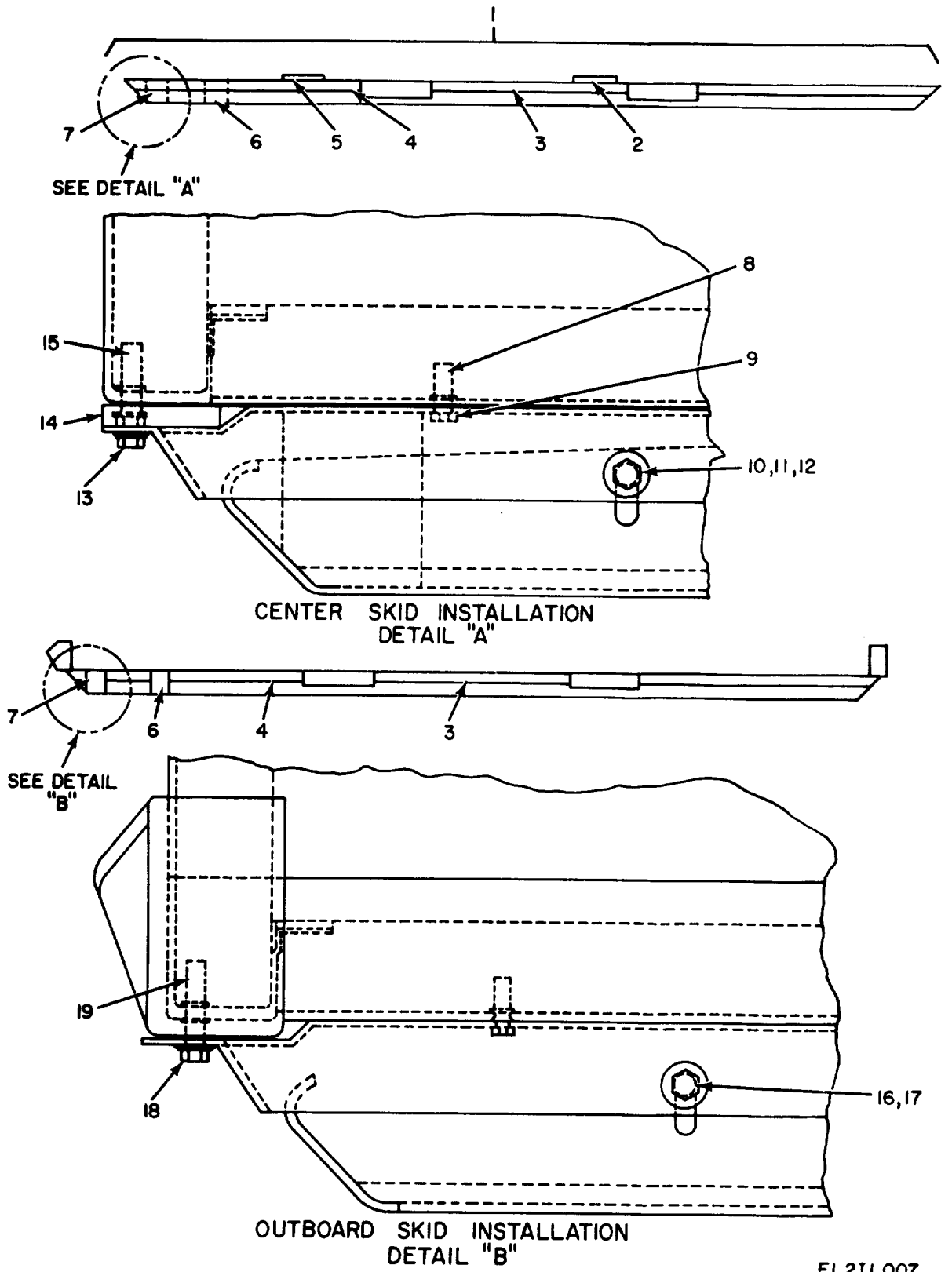
HAND HOLD ASSY.
VIEW A



EL21L006

Figure 6. Shelters, Electrical Equipment S-280A/G and S-280B/G, Exterior Roof View.

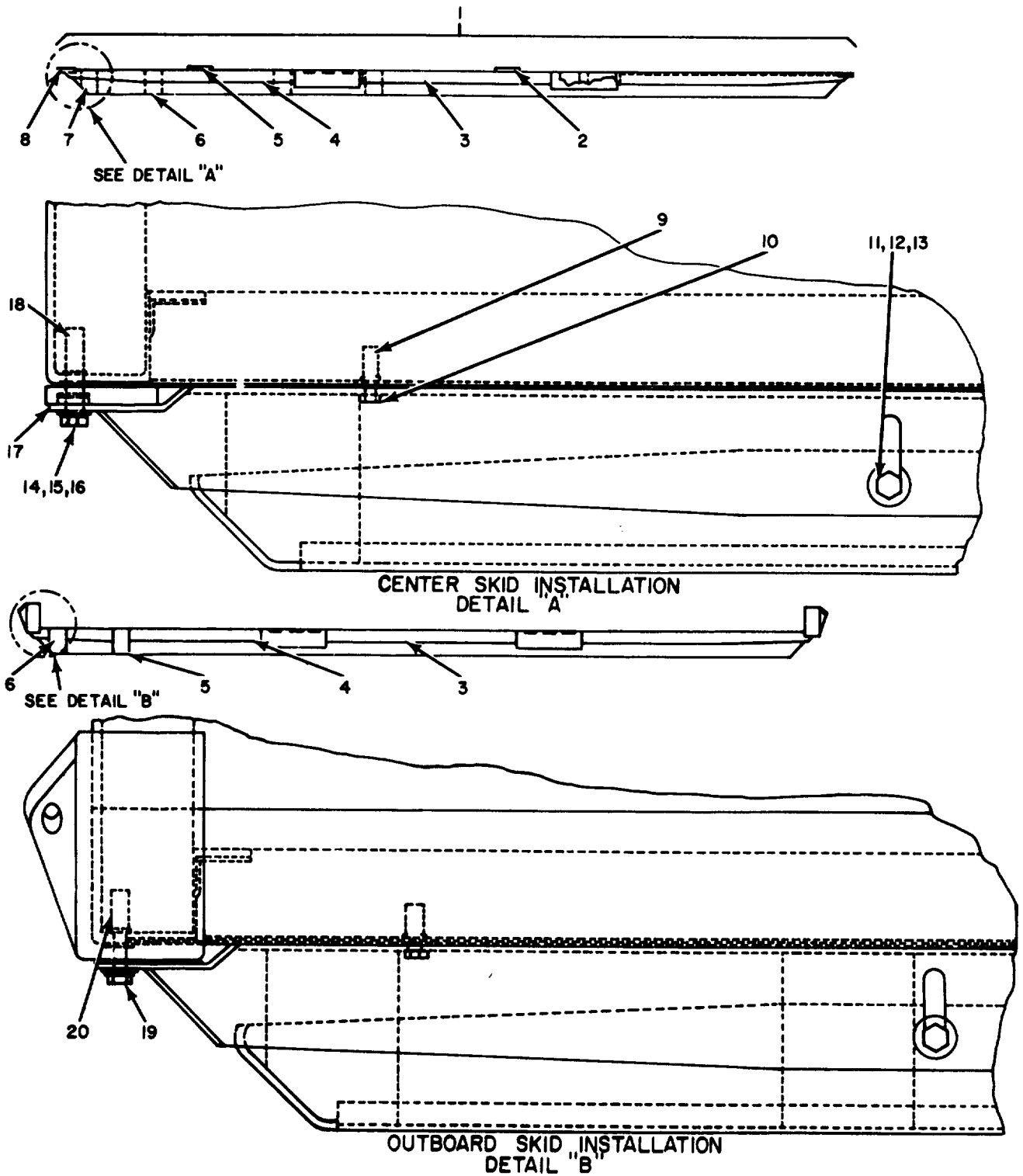
| SECTION II | | | | | | TM11-5410-213-14P | | |
|--------------|------|----------|------------------|--------------|-------------|---|--------|------|
| (1) | (2) | (3) | (4) | (5) | (6) | | (7) | (8) |
| ILLUSTRATION | | | | | | | | |
| (A) | (B) | NATIONAL | | | DESCRIPTION | | | QTY |
| FIG | ITEM | STOCK | PART | | | | | INC |
| NO. | NO. | NUMBER | NUMBER | FSCM | | USABLE ON CODE | U/M | IN |
| | | | | | | | | UNIT |
| 6 | 1 | PAHHH | 5410-00-933-0845 | SMC165382 | 80063 | HAND HOLD ASSEMBLY,ROOF | EA | 1 |
| 6 | 2 | PAHZZ | 5320-00-117-6853 | MS20470AD6-8 | 96906 | RIVET,SOLID | EA | 5 |
| 6 | 3 | PAHZZ | 5340-00-836-1938 | H945SS2RG | 98003 | HANDLE,BAIL TYPE | EA | 1 |
| 6 | 4 | XDHZZ | | SMC165383 | 80063 | PAN,HAND HOLD | EA | 1 |
| 6 | 5 | PAHZZ | 5320-00-582-3304 | MS20600AD4W2 | 96906 | RIVET,BLIND USED ONLY ON S-280A/G AND THE DAAB05-67-C-2509(EMC)CONTRACT VERSION OF THE S-280B/G MODELS | EA | 8 |
| 6 | 5 | PAHZZ | 5320-00-957-3582 | AD42S | 7707 | RIVET,BLIND USED ON S-280B/G CONTRACT DAAB05-69-C-0114(MAGLINE) ONLY | BMC EA | 8 |
| 6 | 6 | PAHZZ | 5320-00-952-4162 | AD43S | 7707 | RIVET,BLIND USFD ON S-280B/G CONTRACT DAAB05-69-C-0114 (MAGLINE) ONLY | BMC EA | 2 |
| 6 | 6 | PAHZZ | 5320-00-582-3305 | MS20600AD4W3 | 96906 | RIVET,BLIND USED ONLY ON S-280A/G AND THE DAAB05-67-C-2509(EMC) CONTRACT VERSION OF THE S-250B/G MODELS | EA | 2 |



EL21L007

Figure 7. Shelters, Electrical Equipment S-280A/G and S-280B/G, Skid Assembly, Model A.

| SECTION II | | | | | | TM11-5410-213-14P | | | (7) | (8) |
|--------------|------|------------------------|-------------|-------|------------------------------------|-------------------|--|--------|------|-----|
| (1) | (2) | (3) | (4) | (5) | (6) | | | | | |
| ILLUSTRATION | | | | | | | | | | |
| (A) | (B) | NATIONAL | | | DESCRIPTION | | | | QTY | |
| FIG | ITEM | STOCK | PART | FSCM | | USABLE ON CODE | | U/M | INC | |
| NO. | NO. | NUMBER | NUMBER | | | | | | IN | |
| | | | | | | | | | UNIT | |
| 7 | 1 | PAHHH 3990-00-916-6083 | SMB555502 | 80063 | SKID ASSEMBLY 3MN | | | 3MN EA | 3 | |
| 7 | 2 | PAHZZ 5365-00-024-6680 | SMD555503-1 | 80063 | SHIM,CENTER,SKID 3MN | | | 3MN EA | 1 | |
| 7 | 3 | XDHZZ | SMD317078 | 80063 | BRACKET,MOUNTING,SKID 3MN | | | 3MN EA | 6 | |
| 7 | 4 | XDHZZ | SMC555517 | 80063 | BRACKET,MOUNTING,WELDMENT,SKID 3MN | | | 3MN EA | 6 | |
| 7 | 5 | PAHZZ 5365-00-001-1940 | SMD555503-2 | 80063 | SHIM,CENTER,SKID 3MN | | | 3MN EA | 2 | |
| 7 | 6 | PAHZZ 5340-00-933-4512 | SMC555515-1 | 80063 | MOUNT,SHOCK,SKID 3MN | | | 3MN EA | 18 | |
| 7 | 7 | PAHZZ 5340-00-928-8998 | SMC555515-2 | 80063 | MOUNT,SHOCK,SKID 3MN | | | 3MN EA | 6 | |
| 7 | 8 | PAHZZ 5310-00-929-6452 | S25B211 | 3481 | RIVNUT 3MN | | | 3MN EA | 14 | |
| 7 | 9 | PAHZZ 5305-00-702-4523 | MS35307-306 | 96906 | SCREW 3MN | | | 3MN EA | 14 | |
| 7 | 10 | PAHZZ 5310-00-050-6646 | MS17830-6C | 96906 | NUT,PLAIN,HEXAGON 3MN | | | 3MN EA | 6 | |
| 7 | 11 | PAHZZ 5310-00-042-6759 | MS35338-83 | 96906 | WASHER,LOCK 3MN | | | 3MN EA | 2 | |
| 7 | 12 | PAHZZ 5310-00-802-4701 | MS15795-813 | 96906 | WASHER,FLAT 3MN | | | 3MN EA | 2 | |
| 7 | 13 | PAHZZ 5306-00-637-9674 | MS35307-336 | 96906 | BOLT,MACHINE 3MN | | | 3MN EA | 2 | |
| 7 | 14 | PAHZZ 5365-00-168-6760 | SMC555549 | 80063 | SHIM,CENTER,SKID ENDS 3MN | | | 3MN EA | 2 | |
| 7 | 15 | PAHZZ 5310-00-937-5949 | S31B500 | 83187 | RIVNUT 3MN | | | 3MN EA | 2 | |
| 7 | 16 | PAHZZ 5305-00-964-0636 | MS35307-378 | 96906 | SCREW,HEXAGON HEAD 3MN | | | 3MN EA | 24 | |
| 7 | 17 | PAHZZ 5310-00-595-6057 | MS15795-815 | 96906 | WASHER,FLAT 3MN | | | 3MN EA | 2 | |
| 7 | 18 | PAHZZ 5306-00-655-6170 | MS35307-338 | 96906 | SCREW,HEXAGON HEAD 3MN | | | 3MN EA | 2 | |
| 7 | 19 | PAHZZ 5310-00-987-9070 | S31B275 | 3481 | RIVNUT 3MN | | | 3MN EA | 4 | |



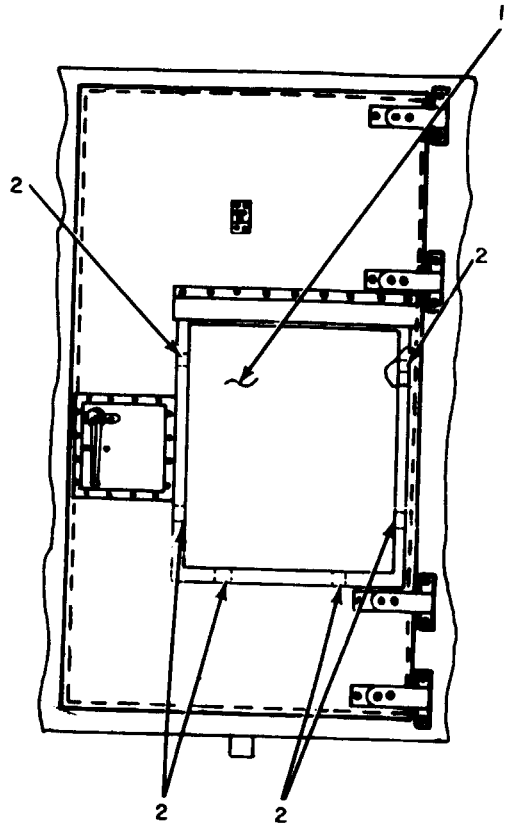
EL21L008

Figure 8. Shelters, Electrical Equipment S-280A/G and S-280B/G, Skid Assembly, Model B.

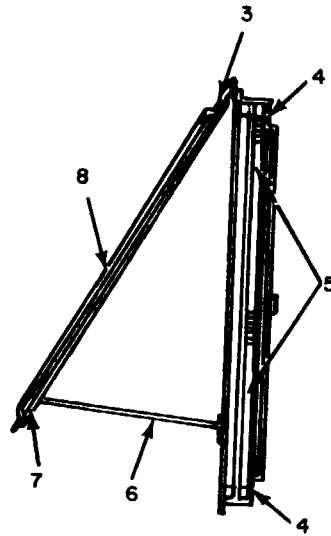
SECTION II

TM11-5410-213-14P

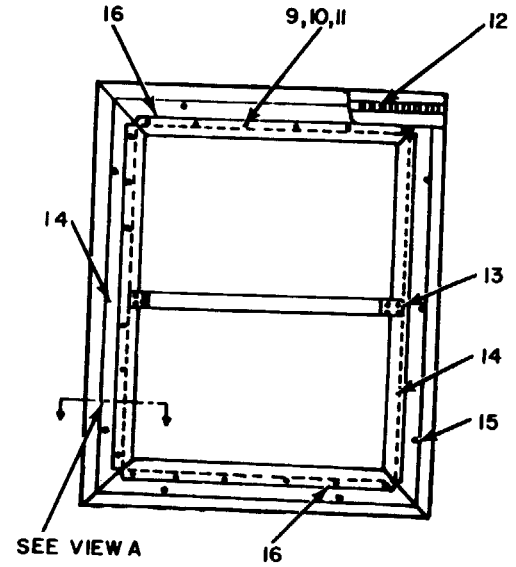
| (1) ILLUSTRATION (A) (B) FIG ITEM NO. NO. | (2) SMR CODE | (3) NATIONAL STOCK NUMBER | (4) PART NUMBER | (5) FSCM | (6) DESCRIPTION USABLE ON CODE | (7) BMC | (8) QTY INC IN UNIT |
|---|--------------------|------------------------------------|-----------------------|-------------|--|------------|---------------------------------|
| 8 1 | PAHHH | 5410-00-107-1198 | SMD162194 | 80063 | SKID ASSEMBLY | BMC | EA 31 |
| 8 2 | PAHZZ | 5365-00-168-6760 | SMC555549 | 80063 | SHIM,CENTER,SKID ENDS,SELECT | BMC | EA 1 |
| 8 3 | PAHZZ | 5340-00-928-8998 | SMC555515-2 | 80063 | MOUNT,SHOCK,SKID | BMC | EA 2 |
| 8 4 | PAHZZ | 5340-00-794-4243 | SMC555515-3 | 80063 | MOUNT,SHOCK,SKID | BMC | EA 6 |
| 8 5 | PAHZZ | 5365-00-001-1940 | SMD555503-2 | 80063 | SHIM,CENTER,SKID ENDS,SELECT | BMC | EA V |
| 8 5 | PAHZZ | 5365-00-024-6680 | SMD555503-1 | 80063 | SHIM,CENTER,SKID ENDS,SELECT | BMC | EA V |
| 8 5 | PAHZZ | 5365-00-434-6944 | SCD595500 | 80063 | SHIM,CENTER,SKID ENDS,SELECT | BMC | EA 1 |
| 8 6 | PAHZZ | 5410-00-290-8866 | SCD595499 | 80063 | MOUNTING BRACKET,SKID USED ON S-280B/G CONTRACT DAAB05-69-C-0114(MAGLINE) ONLY | BMC | EA 1 |
| 8 6 | PAHZZ | 5410-00-407-4954 | SCD200138 | 80063 | BRACKET,MOUNING,SKID USED ON S-280B/G CONTRACT DAAB05-69-C-0114(MAGLINE) ONLY | BMC | EA 2 |
| 8 7 | PAHZZ | 5410-00-407-4955 | SCC200139 | 80063 | BRACKET,MOUNTING,SKID | BMC | EA 1 |
| 8 8 | XDHZZ | | SMB165496-2 | 80063 | PLATE,FORK-LIFT,SKID | BMC | EA 1 |
| 8 9 | PAHZZ | 5310-00-929-6452 | S25B211 | 3481 | RIVNUT | BMC | EA 74 |
| 8 10 | PAHZZ | 5305-00-702-4523 | MS35307-306 | 96906 | BOLT,MACHINE | BMC | EA 58 |
| 8 11 | PAHZZ | 5310-00-726-7700 | 79NB066 | 72962 | NUT,PLAIN,HEXAGON | BMC | EA 6 |
| 8 12 | PAHZZ | 5310-00-595-6057 | MS15795-815 | 96906 | WASHER,FLAT | BMC | EA 12 |
| 8 13 | XDHZZ | | SMB162201 | 80063 | BOLT,HEXAGON HEAD | BMC | EA 6 |
| 8 14 | PAHZZ | 5310-00-802-4701 | MS15795-813 | 96906 | WASHER,FLAT | BMC | EA 6 |
| 8 15 | PAHZZ | 5310-00-974-6623 | MS35338-140 | 96906 | WASHER,LOCK | BMC | EA 2 |
| 8 16 | PAHZZ | 5306-00-637-9674 | MS35307-336 | 96906 | BOLT,MACHINE | BMC | EA 2 |
| 8 17 | PAHZZ | 5365-00-168-6758 | SMB162196-1 | 80063 | SHIM,SKID | BMC | EA 6 |
| 8 18 | PAHZZ | 5310-00-937-5949 | S31B500 | 83187 | RIVNUT | BMC | EA 2 |
| 8 19 | PAHZZ | 5306-00-655-6170 | MS35307-338 | 96906 | SCREW,HEXAGON HEAD | BMC | EA 2 |
| 8 20 | PAHZZ | 5310-00-177-7674 | S10B216 | 3481 | RIVNUT USED ON CONTRACT DAAB05-69-C-0114(MAGLINE) ONLY | BMC | EA 8 |
| 8 20 | PAHZZ | 5310-00-987-9070 | S31B275 | 3481 | RIVNUT USED ON CONTRACT DAAB05-67-C-2509(EMC) ONLY | BMC | EA 4 |



DOOR, EXTERIOR VIEW



AIR INLET ASSEMBLY
INTERIOR VIEW



GASKET ASSEMBLY
TYPICAL BOTH SIDES
VIEW A

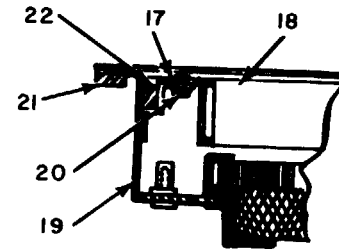
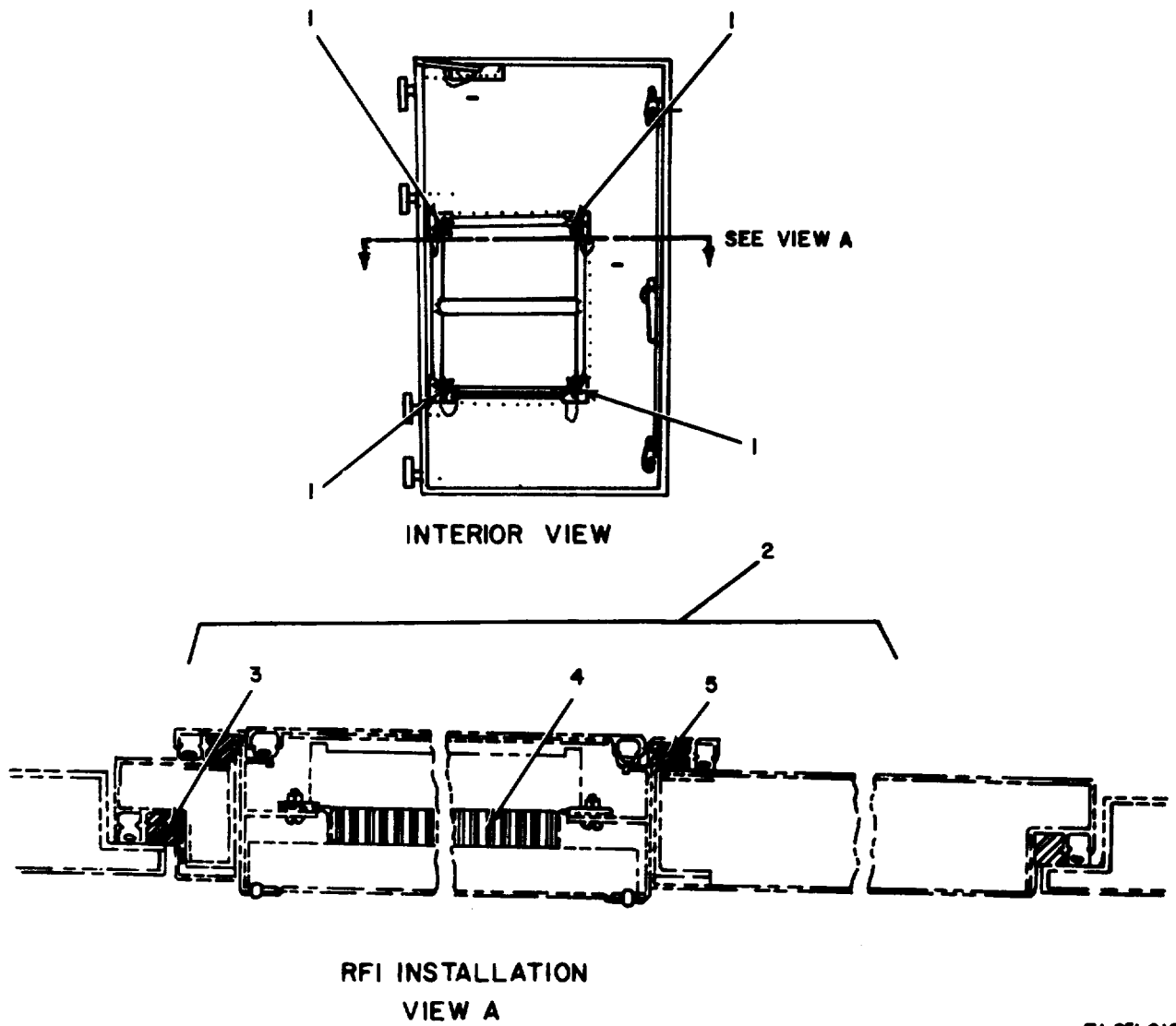


Figure 9. Door Assembly, S-280A/G Shelter.

EL2IL009

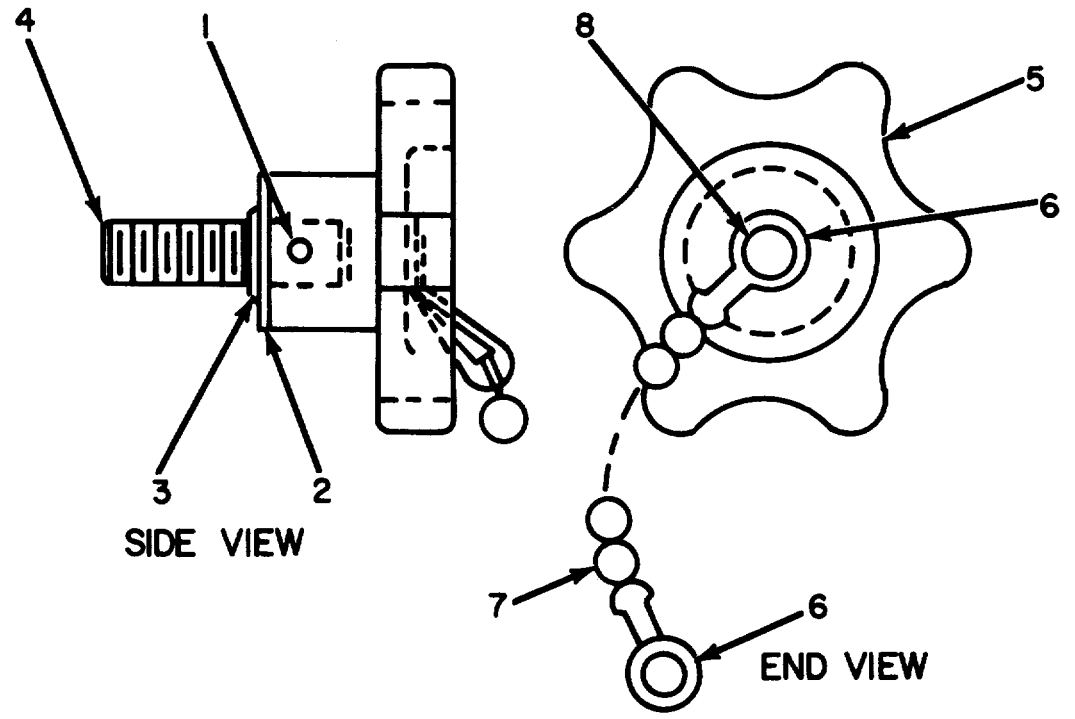
| SECTION II | | | | | | TM11-5410-213-14P | | | (7) | (8) |
|------------------------|------|----------|------------------|---------------|------------------------------|-------------------|--------|--|------|-----|
| (1) | (2) | (3) | (4) | (5) | (6) | | | | | |
| ILLUSTRATION | | | | | | | | | | |
| (A) | (B) | NATIONAL | | | DESCRIPTION | | | | QTY | |
| FIG | ITEM | STOCK | PART | FSCM | | USABLE ON CODE | | | INC | |
| NO. | NO. | NUMBER | NUMBER | | | | U/M | | IN | |
| | | | | | | | | | UNIT | |
| GROUP 01 DOOR ASSEMBLY | | | | | | | | | | |
| 9 | 1 | XDHHH | SMB555528GR2 | 80063 | FILTER ASSEMBLY, INLET | | 3MN EA | | 1 | |
| 9 | 2 | PAHZZ | 5325-00-281-8638 | MS21332-1 | 96906 FASTENER, SNAPSLIDE | | 3MN EA | | 6 | |
| 9 | 3 | XDHZZ | | S10B80 | 3481 RIVNUT | | 3MN EA | | 10 | |
| 9 | 4 | PAHZZ | 5330-00-931-8224 | SMB555564-2 | 80063 GASKET | | 3MN EA | | 2 | |
| 9 | 5 | PAOZZ | 4130-00-933-4477 | SM-C-317069-2 | 80063 FILTER, AIR | | 3MN EA | | 2 | |
| 9 | 6 | XDHZZ | | SMC317063 | 80063 COVER, WELDMENT | | 3MN EA | | 1 | |
| 9 | 7 | PAHZZ | 5315-00-881-2253 | MS16562-221 | 96906 PIN, SPRING | | 3MN EA | | 2 | |
| 9 | 8 | XDHZZ | | SMD317073 | 80063 COVER, WELDMENT | | 3MN EA | | 1 | |
| 9 | 9 | XDHZZ | | MS35233-46 | 96906 SCREW, MACHINE | | 3MN EA | | 28 | |
| 9 | 10 | PAHZZ | 5310-00-045-3299 | MS35338-42 | 96906 WASHER, LOCK | | 3MN EA | | 28 | |
| 9 | 11 | PAHZZ | 5310-00-934-9759 | MS35649-284 | 96906 NUT, PLAIN, HEXAGON | | 3MN EA | | 28 | |
| 9 | 12 | PAHZZ | 5340-00-709-9814 | MS35821-2A | 96906 HINGE, BUTT | | 3MN EA | | 1 | |
| 9 | 13 | XDHZZ | | SMC555529 | 80063 DIVIDER STRIP ASSEMBLY | | 3MN EA | | 1 | |
| 9 | 14 | XDHZZ | | SMC317064-2 | 80063 FRAME, AIR FILTER | | 3MN EA | | 2 | |
| 9 | 15 | PAHZZ | 5320-00-243-3933 | MS20427F4-5 | 96906 RIVET | | 3MN EA | | 4 | |
| 9 | 16 | XDHZZ | | SMC317064-3 | 80063 FRAME, AIR FILTER | | 3MN EA | | 2 | |
| 9 | 17 | PAHZZ | 5305-00-725-4197 | MS51960-5 | 96906 SCREW, MACHINE | | 3MN EA | | 22 | |
| 9 | 18 | PAHZZ | 5410-00-916-6082 | SMD555519 | 80063 LOUVER, METAL | | 3MN EA | | 1 | |
| 9 | 19 | XDHZZ | | SMD317072 | 80063 FILTER BOX WELDMENT | | 3MN EA | | 1 | |
| 9 | 20 | XDHZZ | | SMD555528-3 | 80063 NUT, CLINCH | | 3MN EA | | 22 | |
| 9 | 21 | PAHZZ | 5330-00-933-4514 | SMB555584 | 80063 GASKET | | 3MN EA | | 2 | |
| 9 | 22 | PAHZZ | 5330-00-917-6093 | SMB555564-1 | 80063 GASKET | | 3MN EA | | 2 | |



EL21LO10

Figure 10. Door Assembly, S-280B/G Shelter.

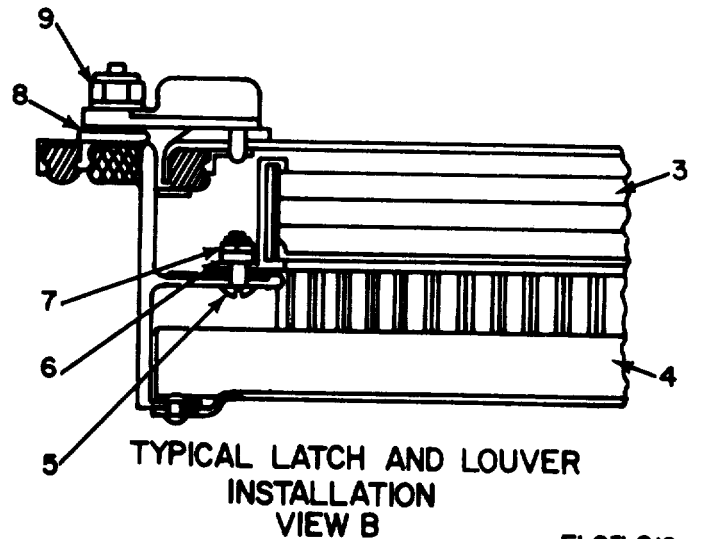
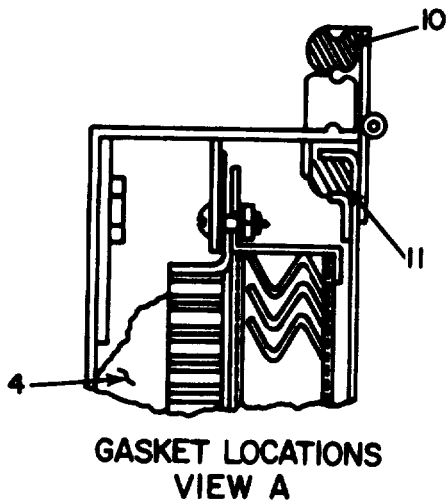
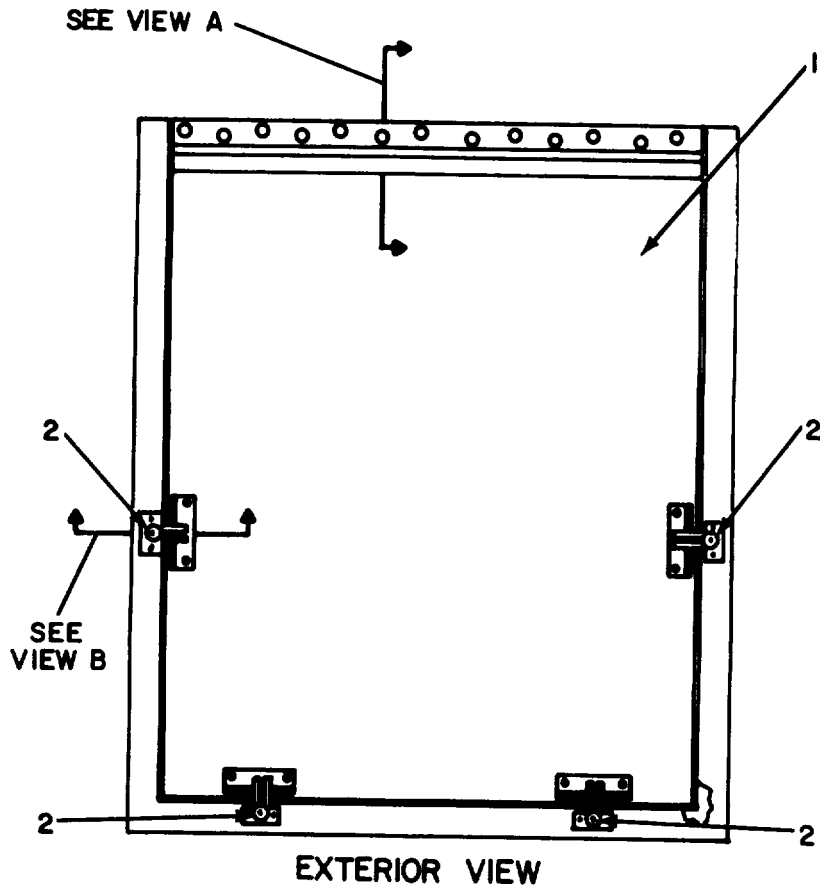
| SECTION II | | | | | | TM11-5410-213-14P | | | |
|--------------|------|----------|------------------|-------------|-------------|--------------------------------|-----|------|---|
| (1) | (2) | (3) | (4) | (5) | (6) | | (7) | (8) | |
| ILLUSTRATION | | | | | | | | | |
| (A) | (B) | NATIONAL | | | DESCRIPTION | | | QTY | |
| FIG | ITEM | STOCK | PART | | | | | INC | |
| NO. | NO. | NUMBER | NUMBER | FSCM | | USABLE ON CODE | U/M | IN | |
| | | | | | | | | UNIT | |
| 10 | 1 | XDHHH | | SMC450441 | 80063 | KNOB ASSEMBLY | BMC | EA | 4 |
| 10 | 2 | PAHZZ | 5410-00-937-5248 | SCD621052 | 80063 | MODIFICATION KIT,RFI MK-1079/G | BMC | EA | 1 |
| 10 | 3 | PAHZZ | 5999-00-136-5803 | SMB564670-3 | 80063 | FILTER,RFI | BMC | EA | 1 |
| 10 | 4 | PAHZZ | 5915-00-007-2526 | SMC450478 | 80063 | FILTER,RFI | BMC | EA | 1 |
| 10 | 5 | PAHZZ | 5999-00-025-9059 | SMB564670-4 | 80063 | SHIELD,RFI | BMC | EA | 1 |



EL2ILO11

Figure 11. Door assembly, Air Filter Removal Knob.

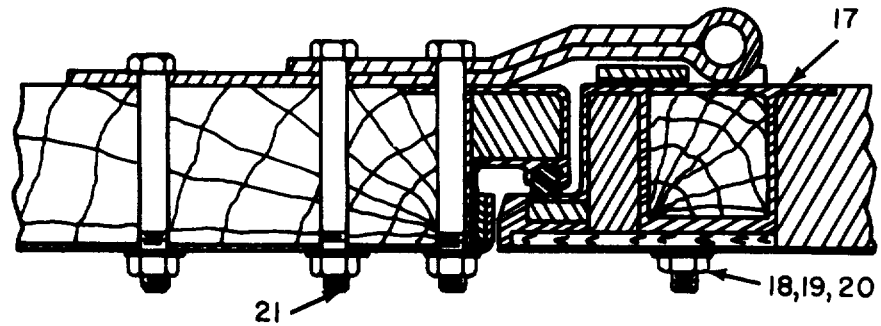
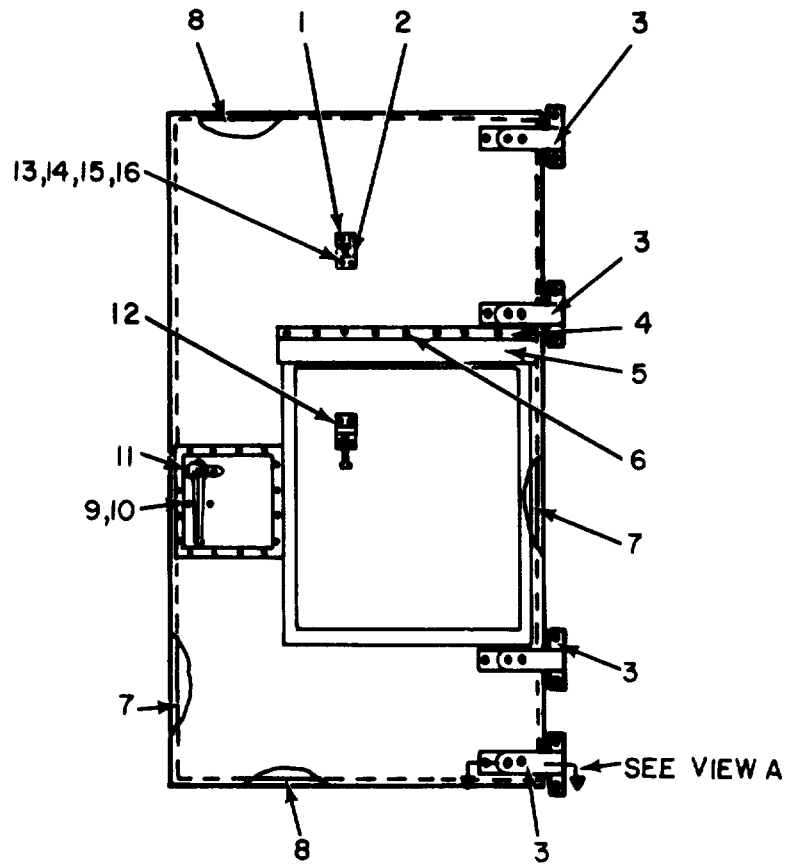
| SECTION II | | | | | | TM11-5410-213-14P | | |
|--------------|------|----------|------------------|-------------|-------------|-------------------|-----|------|
| (1) | (2) | (3) | (4) | (5) | (6) | | (7) | (8) |
| ILLUSTRATION | | | | | | | | |
| (A) | (B) | NATIONAL | | | DESCRIPTION | | | QTY |
| FIG | ITEM | STOCK | PART | | | | | INC |
| NO. | NO. | NUMBER | NUMBER | FSCM | | USABLE ON CODE | U/M | IN |
| | | | | | | | | UNIT |
| 11 | 1 | PAHZZ | 5315-00-058-9720 | MS16562-207 | 96906 | PIN, SPRING | EA | 1 |
| 11 | 2 | PAHZZ | 5310-00-595-6057 | MS15795-815 | 96906 | WASHER, FLAT | EA | 4 |
| 11 | 3 | PAHZZ | 5365-00-804-7642 | 5100-35H | 79136 | RING, RETAINING | EA | 1 |
| 11 | 4 | XDHZZ | | SMB113604 | 80063 | STUD | EA | 1 |
| 11 | 5 | XDHZZ | | SMC615263 | 80063 | KNOB, CASTING | EA | 1 |
| 11 | 6 | XDHZZ | | 13ANOFFSET | 70892 | FASTENER, CHAIN | EA | 2 |
| 11 | 7 | XDHZZ | | SMC450441-3 | 80063 | CHAIN, BEAD | EA | 1 |
| 11 | 8 | PAHZZ | 5305-00-253-5625 | MS21318-46 | 96906 | SCREW, DRIVE | EA | 1 |



EL2IL012

Figure 12. Door Assembly, Emergency Exit Panel.

| SECTION II | | | | | | TM11-5410-213-14P | | | |
|--------------|------|----------|------------------|-----------------|-------------|---|-----|------|----|
| (1) | (2) | (3) | (4) | (5) | (6) | | (7) | (8) | |
| ILLUSTRATION | | | | | | | | | |
| (A) | (B) | NATIONAL | | | DESCRIPTION | | | QTY | |
| FIG | ITEM | STOCK | PART | FSCM | | USABLE ON CODE | U/M | INC | |
| NO. | NO. | NUMBER | NUMBER | | | | | IN | |
| | | | | | | | | UNIT | |
| 12 | 1 | XDHHH | | SMD450462 | 80063 | PANEL ASSEMBLY, EMERGENCY EXIT | BMC | EA | 1 |
| 12 | 2 | PAHZZ | 5340-00-118-0018 | SMB450447 | 80063 | LATCH, COVER | BMC | EA | 4 |
| 12 | 3 | XDHZZ | | SMD615264 | 80063 | LOUVER ASSEMBLY, INTAKE | BMC | EA | 1 |
| 12 | 4 | PAOZZ | 9330-00-107-1165 | SMC450466 | 80063 | FILTER, AIR | BMC | EA | 2 |
| 12 | 5 | PAHZZ | 5305-00-984-6193 | MS35223-45 | 96906 | SCREW, MACHINE USED ON CONTRACT DAAB05-67-0-2509(EMC) ONLY | BMC | EA | 94 |
| 12 | 5 | XDHZZ | | SMD450462-10 | 80063 | SCREW, MACHINE USED ON S-280B/G CONTRACT DAAB05-69-C-0114(MAGLINE) ONLY | BMC | EA | 94 |
| 12 | 6 | PAHZZ | 5310-00-933-8119 | MS35338-80 | 96906 | WASHER, LOCK | BMC | EA | 94 |
| 12 | 7 | PAHZZ | 5310-00-934-9757 | MS35649-282 | 96906 | NUT, PLAIN, HEXAGON USED ON CONTRACT DAAB05-67-C-2509(EMC) ONLY | BMC | EA | 94 |
| 12 | 7 | PAHZZ | 5310-00-934-9757 | MS35649-282 | 96906 | NUT, PLAIN, HEXAGON USED ON CONTRACT DAAB05-69-C-0114(MAGLINE) ONLY | BMC | EA | 94 |
| 12 | 8 | PAHZZ | 5310-00-145-2217 | 101-1-4-31 | 2751 | WASHER, NYLON | BMC | EA | 8 |
| 12 | 9 | PAHZZ | 5310-00-014-5847 | 2INTU040 | 72962 | NUT, PLAIN, HEXAGON | BMC | EA | 1 |
| 12 | 10 | PAHZZ | 5330-00-179-0304 | SMC564839-106IN | 80063 | GASKET, PANEL, EMERGENCY | BMC | EA | 1 |
| 12 | 11 | PAHZZ | 5330-00-179-0303 | SMC564839-96IN | 80063 | GASKET, LOUVER | BMC | EA | 1 |



TYPICAL HINGE INSTALLATION
VIEW A

EL2ILO13

Figure 13. Door Assembly, Exterior View.

| SECTION II | | TM11-5410-213-14P | | | | | | |
|--------------|------|------------------------|--------------|-------|---|----------------|--------|------|
| (1) | (2) | (3) | (4) | (5) | (6) | | (7) | (8) |
| ILLUSTRATION | | | | | | | | |
| (A) | (B) | NATIONAL | PART | | DESCRIPTION | | | QTY |
| FIG | ITEM | STOCK | NUMBER | FSCM | | USABLE ON CODE | U/M | INC |
| NO. | NO. | NUMBER | NUMBER | | | | | IN |
| | | | | | | | | UNIT |
| 13 | 1 | PAHZZ 5340-00-493-9235 | SMB555598-2 | 80063 | KEEPER, TOP LATCH | | EA | 1 |
| 13 | 2 | PAHZZ 5320-00-582-3276 | MS20600AD6W4 | 96906 | RIVET, BLIND | | 3MN EA | 8 |
| 13 | 3 | PAHZZ 5340-00-917-6104 | SMC317057 | 80063 | HINGE ASSEMBLY | | EA | 4 |
| 13 | 4 | XDHZZ | SMB450465 | 80063 | STRIP, DRIP CAP | | BMC EA | 1 |
| 13 | 4 | XDHZZ | SMD555531-3 | 80063 | STRIP, DRIP, CAP ALUMINUM | | 3MN EA | 1 |
| 13 | 5 | PAHZZ 9320-00-134-9663 | SMB555572-6 | 80063 | DRIP CAP | | EA | 1 |
| 13 | 6 | PAHZZ 5320-00-952-4159 | AD64S | 7707 | RIVET, BLIND | | BMC EA | 21 |
| 13 | 6 | PAHZZ 5320-00-582-3304 | MS20600AD4W2 | 96906 | RIVET, BLIND | | 3MN EA | 9 |
| 13 | 7 | XDHZZ | SMB555573-2 | 80063 | STRIP, INSULATING | | 3MN EA | 2 |
| 13 | 8 | XDHZZ | SMB555573-1 | 80063 | STRIP, INSULATING | | 3MN EA | 2 |
| 13 | 9 | PAHZZ 5305-00-267-8974 | MS90726-8 | 96906 | BOLT, HEXAGON HEAD | | 3MN EA | 2 |
| 13 | 10 | PAHZZ 5310-00-301-4558 | SCB200146 | 80063 | WASHER, FLAT | | 3MN EA | 2 |
| 13 | 11 | PAHZZ 5305-00-533-5446 | MS35493-53 | 96906 | SCREW, WOOD | | BMC EA | 2 |
| 13 | 11 | XDHZZ | MS35208-67 | 96906 | SCREW, WOOD | | 3MN EA | 2 |
| 13 | 12 | PAHZZ 5340-00-928-8999 | SMB555598-1 | 80063 | LATCH ASSEMBLY, LOUVER COVER | | EA | 1 |
| 13 | 13 | PAHZZ 5305-00-984-7364 | MS35206-273 | 96906 | SCREW, MACHINE | | BMC EA | 4 |
| 13 | 14 | PAHZZ 5310-00-809-8546 | MS27183-8 | 96906 | WASHER, FLAT | | BMC EA | 4 |
| 13 | 15 | PAHZZ 5310-00-045-3296 | MS35338-43 | 96906 | WASHER, LOCK | | BMC EA | 4 |
| 13 | 16 | PAHZZ 5310-00-934-9758 | MS35649-202 | 96906 | NUT, PLAIN, HEXAGON | | BMC EA | 4 |
| 13 | 17 | PAHZZ 5365-00-163-2814 | SMB162197-1 | 80063 | SPACER, PLATE | | EA | 1 |
| 13 | 17 | PAHZZ 5365-00-235-0014 | SMB162197-2 | 80063 | SPACER, PLATE | | EA | 1 |
| 13 | 17 | PAHZZ 5365-00-169-6052 | SMB162197-3 | 80063 | SPACER, PLATE | | EA | 1 |
| 13 | 17 | PAHZZ 5365-00-177-1927 | SMB162197-4 | 80063 | SPACER, PLATE | | EA | 1 |
| 13 | 18 | PAHZZ 5306-00-182-1513 | AN5C25A | 88044 | BOLT, HEXAGON HEAD USED ON S-280B/G AND THE DAAB05-67-C-2509 (EMC) CONTRACT VERSION OF THE S-280B/G MODELS | | EA | 8 |
| 13 | 18 | PAHZZ 5306-00-182-1512 | AN5C24A | 88044 | BOLT, HEXAGON HEAD USED ONLY ON S-280A/G AND THE DAAB05-67-C-2509 (EMC) CONTRACT VERSION OF THE S-280B/G MODELS | | BMC EA | 8 |
| 13 | 19 | PAHZZ 5310-00-625-5756 | MS15795-812 | 96906 | WASHER, FLAT USED ON S-280B/G CONTRACT DAAB05-67-C-0114 (MAGLINE) ONLY | | EA | 8 |
| 13 | 19 | PAHZZ 5310-00-081-4219 | MS27183-12 | 96906 | WASHER, FLAT USED ONLY ON S-280BA/G AND THE DAAB05-67-C-2509 (EMC) CONTRACT VERSION OF THE S-280B/G MODELS | | BMC EA | 8 |
| 13 | 20 | PAHZZ 5310-00-807-1469 | MS21042-5 | 96906 | NUT, SELF-LOCKING | | EA | 8 |
| 13 | 21 | PAHZZ 5306-00-182-1514 | AN5C26A | 88044 | BOLT, HEXAGON HEAD | | EA | 8 |

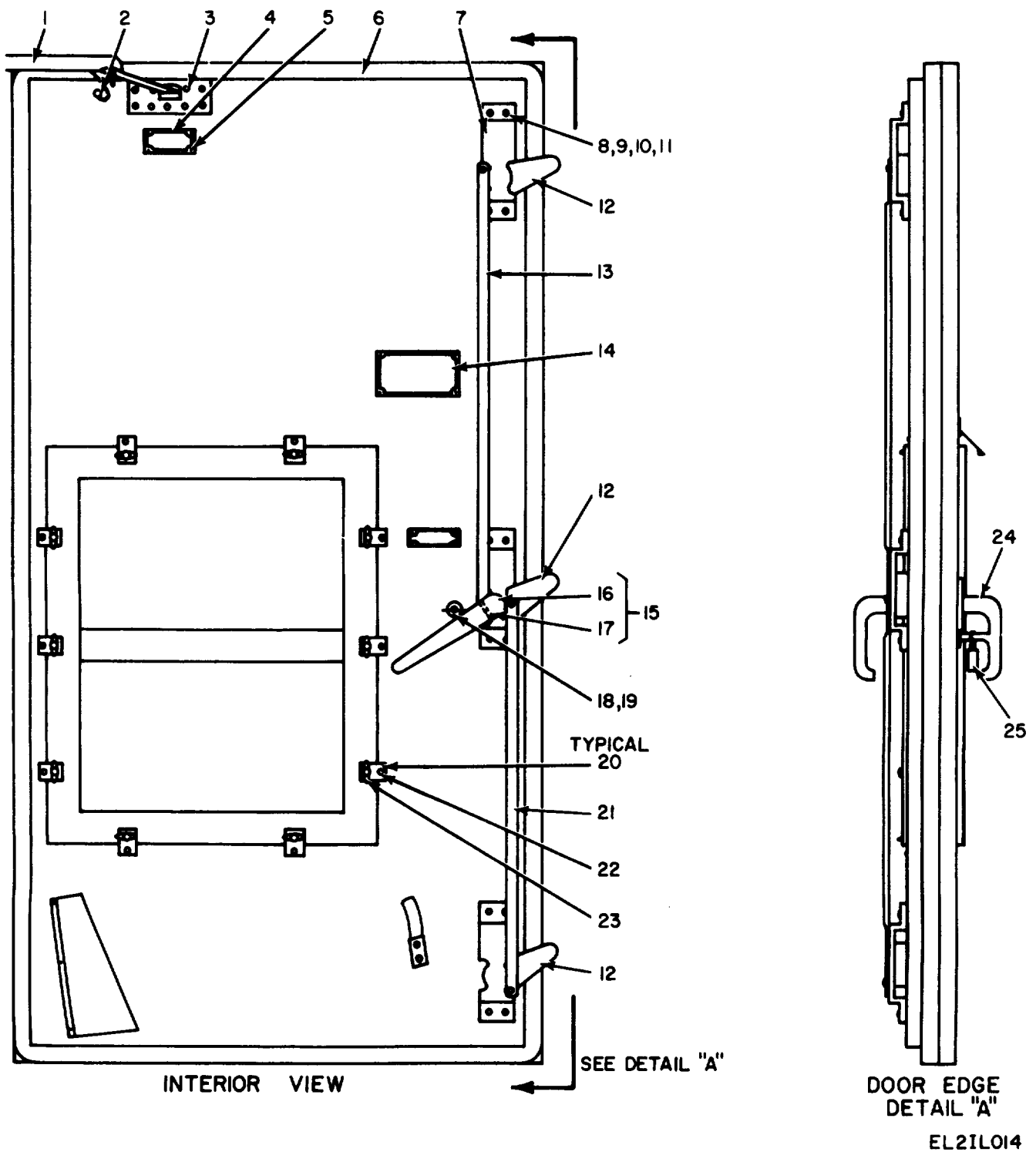


Figure 14. Door Assembly, Interior View, S-280A/G Shelter.

| SECTION II | | | | | | TM11-5410-213-14P | | | (7) | (8) |
|--------------|------|----------|------------------|--------------|-------------|--------------------------|--|-----|------|-----|
| (1) | (2) | (3) | (4) | (5) | (6) | | | | | |
| ILLUSTRATION | | | | | | | | | | |
| (A) | (B) | NATIONAL | | | DESCRIPTION | | | | QTY | |
| FIG | ITEM | STOCK | PART | FSCM | | USABLE ON CODE | | U/M | INC | |
| NO. | NO. | NUMBER | NUMBER | | | | | | IN | |
| | | | | | | | | | UNIT | |
| 14 | 1 | XDHXX | | SMD317071 | 80063 | BRACE ASSEMBLY, DOOR | | 3MN | EA | 1 |
| 14 | 2 | PAHZZ | 5305-00-533-5446 | MS35493-53 | 96906 | SCREW, WOOD | | 3MN | EA | 1 |
| 14 | 3 | PAHZZ | 5305-00-052-6923 | MS24629-59 | 96906 | SCREW, MACHINE | | 3MN | EA | 10 |
| 14 | 4 | XDHZZ | | SMB165337 | 80063 | PLATE, INSTRUCTION | | 3MN | EA | 1 |
| 14 | 5 | PAHZZ | 5320-00-582-3304 | MS20600AD4W2 | 96906 | RIVET, BLIND | | 3MN | EA | 8 |
| 14 | 6 | PAHZZ | 5330-00-916-6086 | SMB555582 | 80063 | GASKET | | 3MN | EA | 1 |
| 14 | 7 | PAHHH | 5340-00-917-6091 | SMD555535 | 80063 | DOOR LATCH ASSEMBLY | | 3MN | EA | 1 |
| 14 | 8 | PAHZZ | 5306-00-151-2617 | AN5-26A | 88044 | BOLT, CARRIAGE | | 3MN | EA | 8 |
| 14 | 9 | PAHZZ | 5310-00-582-5677 | MS15795-810 | 96906 | WASHER, FLAT, STEEL | | 3MN | EA | 12 |
| 14 | 10 | PAHZZ | 5310-00-903-5966 | MS51971-1 | 96906 | NUT, PLAIN, HEXAGON | | 3MN | EA | 10 |
| 14 | 11 | PAHZZ | 5310-00-933-8121 | MS35338-139 | 96906 | WASHER, LOCK | | 3MN | EA | 12 |
| 14 | 12 | XDHZZ | | SMD555535-2 | 80063 | FROST BREAKER | | 3MN | EA | 3 |
| 14 | 13 | XDHZZ | | SMC555565GR1 | 80063 | ROD, LATCH, MODIFIED | | 3MN | EA | 1 |
| 14 | 14 | XDHZZ | | SMB165327 | 80063 | PLATE, INSTRUCTION | | 3MN | EA | 1 |
| 14 | 15 | PAHHH | 5340-00-917-6103 | SMD555535-1 | 80063 | HANDLE ASSEMBLY | | 3MN | EA | 1 |
| 14 | 16 | PAHZZ | 5340-00-974-9847 | AL15818 | 19220 | HANDLE, INSIDE | | 3MN | EA | 1 |
| 14 | 17 | PAHZZ | 5315-00-168-2931 | 27X405C | 19220 | PIN, GROVE | | 3MN | EA | 1 |
| 14 | 18 | PAHZZ | 5305-00-946-2371 | SMB165364 | 80063 | THUMBSCREW | | 3MN | EA | 1 |
| 14 | 19 | PAHZZ | 5310-00-917-9916 | SMB555595 | 80063 | WASHER, CRIMP, MESH | | 3MN | EA | 1 |
| 14 | 20 | XDHZZ | | SMB555583 | 80063 | CLIP, LOCKING | | 3MN | EA | 10 |
| 14 | 21 | XDHZZ | | SMC555565GR2 | 80063 | ROD, LATCH, MODIFIED | | 3MN | EA | 1 |
| 14 | 22 | XDHZZ | | MS35495-1 | 96906 | SCREW, WOOD | | 3MN | EA | 10 |
| 14 | 23 | PAHZZ | 5305-00-934-9906 | SMB555570 | 80063 | THUMBSCREW | | 3MN | EA | 10 |
| 14 | 24 | PAHZZ | 5340-00-973-2655 | AL5624-52 | 19220 | HANDLE ASSEMBLY, OUTSIDE | | 3MN | EA | 1 |
| 14 | 25 | PAOZZ | 5340-00-682-1508 | MS35647-3 | 96906 | PADLOCK AND KEY | | 3MN | EA | 1 |

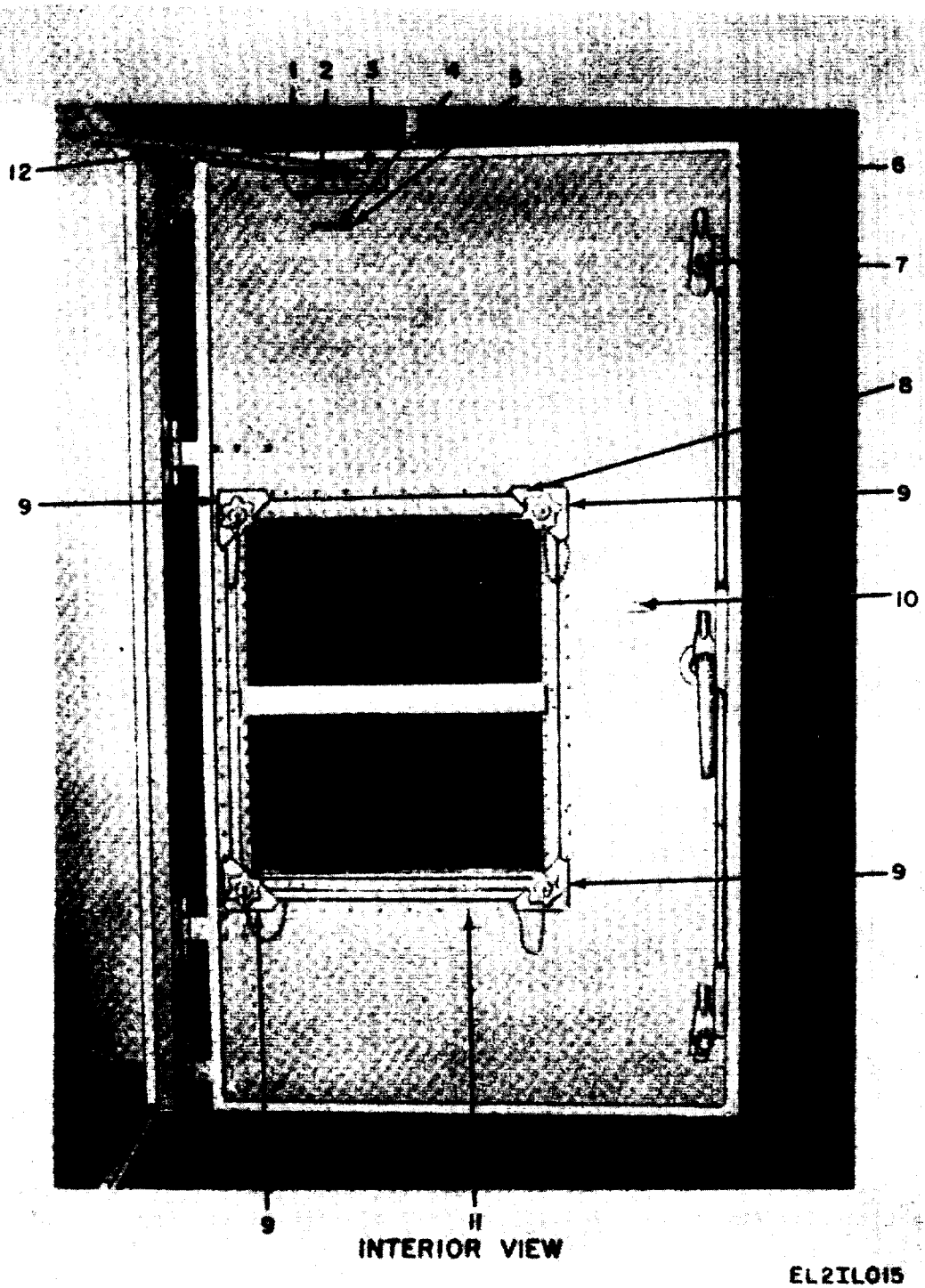


Figure 15. Door Assembly, Interior View, S-280B/G Shelter.

| SECTION II | | | | | | TM11-5410-213-14P | | | |
|--------------|------|----------|------------------|-----------------|-------------|----------------------------------|-----|------|----|
| (1) | (2) | (3) | (4) | (5) | (6) | | (7) | (8) | |
| ILLUSTRATION | | | | | | | | | |
| (A) | (B) | NATIONAL | | | DESCRIPTION | | | QTY | |
| FIG | ITEM | STOCK | PART | | | | | INC | |
| NO. | NO. | NUMBER | NUMBER | FSCM | | USABLE ON CODE | U/M | IN | |
| | | | | | | | | UNIT | |
| 15 | 1 | XDHZZ | | SCC200135 | 80063 | ANGLE, DOOR STOP | BMC | EA | 1 |
| 15 | 2 | PAHZZ | 5305-00-052-7436 | MS24617-54 | 96906 | SCREW, TYPE A | BMC | EA | 10 |
| 15 | 3 | PAHZZ | 5306-00-637-8062 | AN101011 | 88044 | BOLT, MACHINE | BMC | EA | 6 |
| 15 | 4 | XDHZZ | | SMC564811 | 80063 | PLATE, INSTRUCTION | BMC | EA | 1 |
| 15 | 5 | PAHZZ | 5320-00-582-3304 | MS20600AD4W2 | 96906 | RIVET, BLIND | BMC | EA | 6 |
| 15 | 6 | PAHZZ | 5330-00-179-0305 | SMC564839-205IN | 80063 | GASKET, LOUVER | BMC | EA | 1 |
| 15 | 7 | PAHHH | 5340-00-794-4440 | SCD200140 | 80063 | DOOR LATCH ASSEMBLY | BMC | EA | 1 |
| 15 | 8 | PAHZZ | 5320-00-408-9928 | AD68ABS | 7707 | RIVET, BLIND | BMC | EA | 8 |
| 15 | 9 | XDHZZ | | SMC450443 | 80063 | RETAINER, AIR INLET, CORNER CAST | BMC | EA | 4 |
| 15 | 10 | XDHZZ | | SMB165334 | 80063 | PLATE, INSTRUCTION | BMC | EA | 1 |
| 15 | 11 | PAHZZ | 5320-00-882-8385 | AD66H | 7707 | RIVET, BLIND | BMC | EA | 36 |
| 15 | 12 | PAHHH | 5410-00-107-4105 | SCC200156 | 80063 | BRACE ASSEMBLY, DOOR | BMC | EA | 1 |

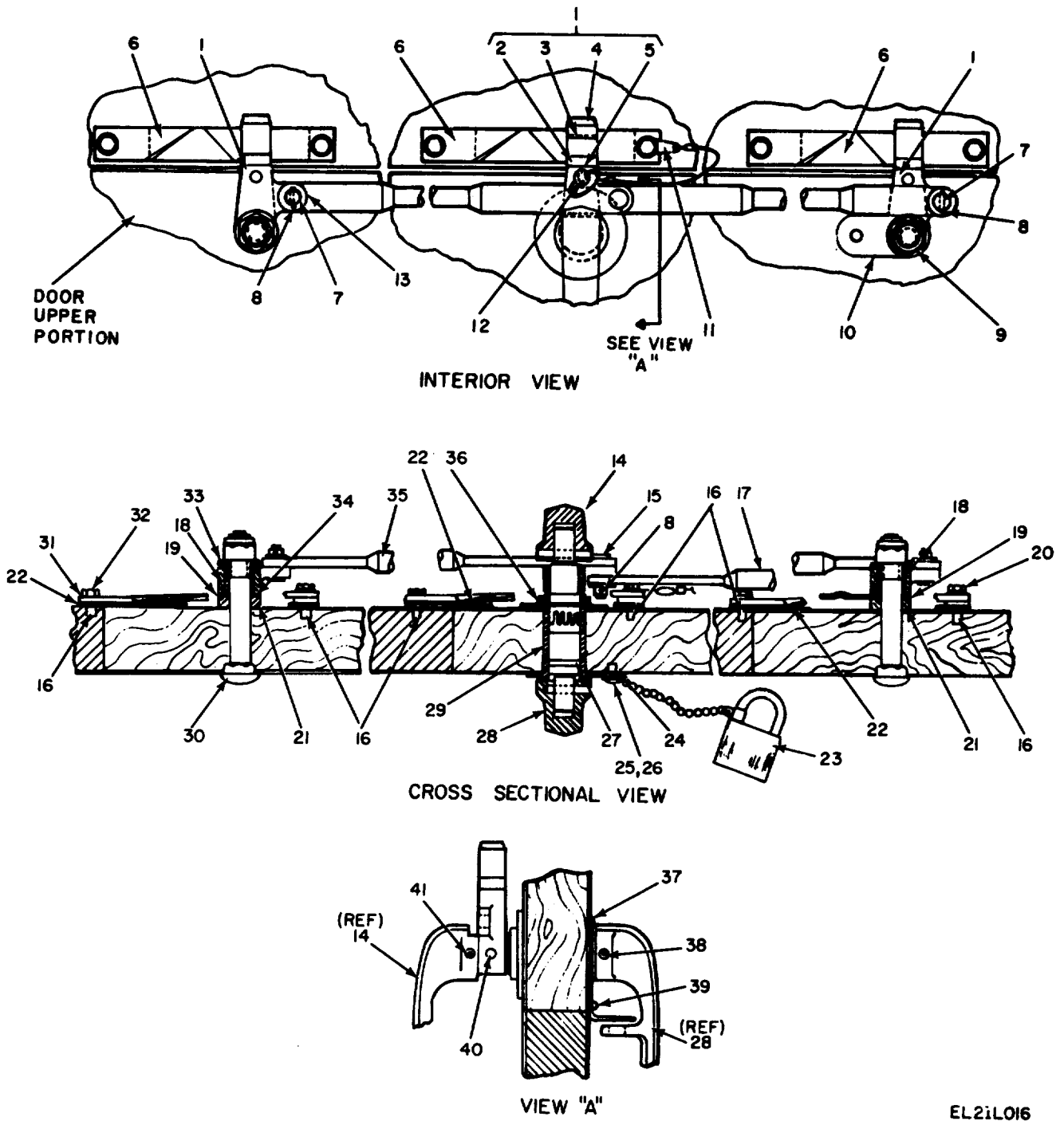


Figure 16. Door Assembly, Latch and Handle S-280B/G Shelter.

| SECTION II | | TM11-5410-213-14P | | | | | | |
|--------------|------|-------------------|------------------|--------------|-------------|--------------------------|----------|--|
| (1) | (2) | (3) | (4) | (5) | (6) | (7) | (8) | |
| ILLUSTRATION | | | | | | | | |
| (A) | (B) | NATIONAL | PART | FSCM | DESCRIPTION | USABLE ON CODE | QTY | |
| FIG | ITEM | STOCK | NUMBER | | | | INC | |
| NO. | NO. | NUMBER | NUMBER | | | | IN | |
| | | | | | | | UNIT | |
| 16 | 1 | PAHZZ | 5340-00-229-5747 | SCC200141 | 80063 | LATCH ARM ASSEMBLY | BMC EA 3 | |
| 16 | 2 | XDHZZ | | SCB200144 | 80063 | ROLLER-EXTENSION | BMC EA 1 | |
| 16 | 3 | PAHZZ | 5315-00-826-3251 | MS16562-223 | 96906 | PIN, SPRING | BMC EA 1 | |
| 16 | 4 | XDHZZ | | SCB200143 | 80063 | ROLLER-LATCH | BMC EA 1 | |
| 16 | 5 | XDHZZ | | SCC200142 | 80063 | ARM-LATCH | BMC EA 1 | |
| 16 | 6 | PAHZZ | 5410-00-231-6429 | SCC200154 | 80063 | KEEPER | BMC EA 3 | |
| 16 | 7 | PAHZZ | 5315-00-075-5828 | MS20392-5C23 | 96906 | PIN, END SECTION | BMC EA 2 | |
| 16 | 8 | PAHZZ | 1015-01-019-7117 | MS171526 | 96906 | PIN, SPRING | BMC EA 3 | |
| 16 | 9 | PAHZZ | 5310-00-406-7240 | MS17830-10C | 96906 | NUT, SELF-LOCKING | BMC EA 2 | |
| 16 | 10 | XDHZZ | | SCB595073 | 80063 | DETENT, LATCH ARM | BMC EA 1 | |
| 16 | 11 | XDHZZ | | 52413 | 84256 | LANYARD ASSEMBLY | BMC EA 1 | |
| 16 | 12 | PAHZZ | 5340-00-786-4798 | BLDC4-09 | 84256 | PIN, SHEAR | BMC EA 1 | |
| 16 | 13 | PAHZZ | 5310-00-183-4355 | AN960C616L | 88044 | WASHER, FLAT | BMC EA 3 | |
| 16 | 14 | PAHZZ | 5340-00-794-4610 | SMB113596-1 | 80063 | HANDLE, INSIDE | BMC EA 1 | |
| 16 | 15 | PAHZZ | 5315-00-957-2649 | MS20392-5C33 | 96906 | PIN, CENTER SECTION | BMC EA 1 | |
| 16 | 16 | PAHZZ | 5340-00-852-4506 | MS35914-151 | 96906 | INSERT, TAP LOCK | BMC EA 6 | |
| 16 | 17 | PAHZZ | 5340-00-793-1099 | SCD56320GRI | 80063 | ROD, LATCH, LOWER | BMC EA 1 | |
| 16 | 18 | PAHZZ | 5365-00-263-9560 | SCB200145 | 80063 | SPACER | BMC EA 2 | |
| 16 | 19 | XDHZZ | | SC0200140-8 | 80063 | WASHER, SHIM | BMC EA 2 | |
| 16 | 20 | PAHZZ | 5305-00-207-8253 | MS35307-308 | 96906 | SCREW, HEXAGON HEAD | BMC EA 3 | |
| 16 | 21 | PAHZZ | 5365-00-173-7010 | SMB615259-1 | 80063 | SPACER | BMC EA 2 | |
| 16 | 22 | PAHZZ | 5365-00-168-6762 | SCB200153-2 | 80063 | SPACER, PLATE | BMC EA 3 | |
| 16 | 22 | PAHZZ | 5365-00-168-6761 | SCB200153-1 | 80063 | SPACER, PLATE | BMC EA 3 | |
| 16 | 22 | PAHZZ | 5365-00-163-2815 | SCB200153-4 | 80063 | SPACER, PLATE | BMC EA 3 | |
| 16 | 23 | PAOZZ | 5340-00-682-1508 | MS35647-3 | 96906 | PADLOCK AND KEY | BMC EA 1 | |
| 16 | 24 | PAHZZ | 5340-00-143-0394 | MS35914-149 | 96906 | INSERT, TAP LOCK | BMC EA 1 | |
| 16 | 25 | PAHZZ | 5305-00-050-9230 | MS51957-64 | 96906 | SCREW, MACHINE | BMC EA 1 | |
| 16 | 26 | PAHZZ | 5310-00-869-9576 | MS35338-157 | 96906 | WASHER, LOCK | BMC EA 1 | |
| 16 | 27 | PAHZZ | 5330-00-248-3847 | MS29513-115 | 96906 | O-RING | BMC EA 1 | |
| 16 | 28 | PAHZZ | 5340-00-794-4612 | SMC113597 | 80063 | HANDLE ASSEMBLY, OUTSIDE | BMC EA 1 | |
| 16 | 29 | XDHZZ | | SCB200151 | 80063 | SLEEVE, SHAFT | BMC EA 1 | |

| SECTION II | | | | | | TM11-5410-213-14P | | | | |
|--------------|------|----------|------------------|---------------|-------------|---------------------|-----|-----|-----|------|
| (1) | (2) | (3) | (4) | (5) | (6) | | (7) | (8) | | |
| ILLUSTRATION | | | | | | | | | QTY | INC |
| (A) | (B) | NATIONAL | | | DESCRIPTION | | | | IN | UNIT |
| FIG | ITEM | SMR | STOCK | PART | | | | | | |
| NO. | NO. | CODE | NUMBER | NUMBER | FSCM | USABLE ON CODE | U/M | | | |
| 16 | 30 | XDHZZ | | SMB162200 | 80063 | BOLT, CARRIAGE | BMC | EA | 2 | |
| 16 | 31 | PAHZZ | 5310-00-883-9417 | MS35338-158 | 96906 | WASHER, LOCK | BMC | EA | 6 | |
| 16 | 32 | PAHZZ | 5305-00-021-3620 | MS35307-307 | 96906 | SCREW, HEXAGON HEAD | BMC | EA | 3 | |
| 16 | 33 | PAHZZ | 5310-00-301-4558 | SCB200146 | 80063 | WASHER, FLAT | BMC | EA | 2 | |
| 16 | 34 | PAHZZ | 5365-00-037-8762 | SMB615259-2 | 80063 | SPACER | BMC | EA | 1 | |
| 16 | 35 | PAHZZ | 5340-00-794-4595 | SCD563202GR11 | 80063 | ROD-LATCH | BMC | EA | 1 | |
| 16 | 36 | XDHZZ | | SCB200150 | 80063 | NUT, SLEEVE | BMC | EA | 1 | |
| 16 | 37 | XDHZZ | | SMC615255 | 80063 | PLATE, ESCUTCHEON | BMC | EA | 1 | |
| 16 | 38 | PAHZZ | 5315-00-846-8337 | MS171659 | 96906 | PIN, SPRING | BMC | EA | 1 | |
| 16 | 39 | PAHZZ | 5305-00-533-5446 | MS35493-53 | 96906 | SCREW, WOOD | BMC | EA | 1 | |
| 16 | 40 | PAHZZ | 5315-00-062-5417 | MS35674-41 | 96906 | PIN, GROOVED | BMC | EA | 1 | |
| 16 | 41 | PAHZZ | 5315-00-846-8337 | MS171659 | 96906 | PIN, SPRING | BMC | EA | 1 | |

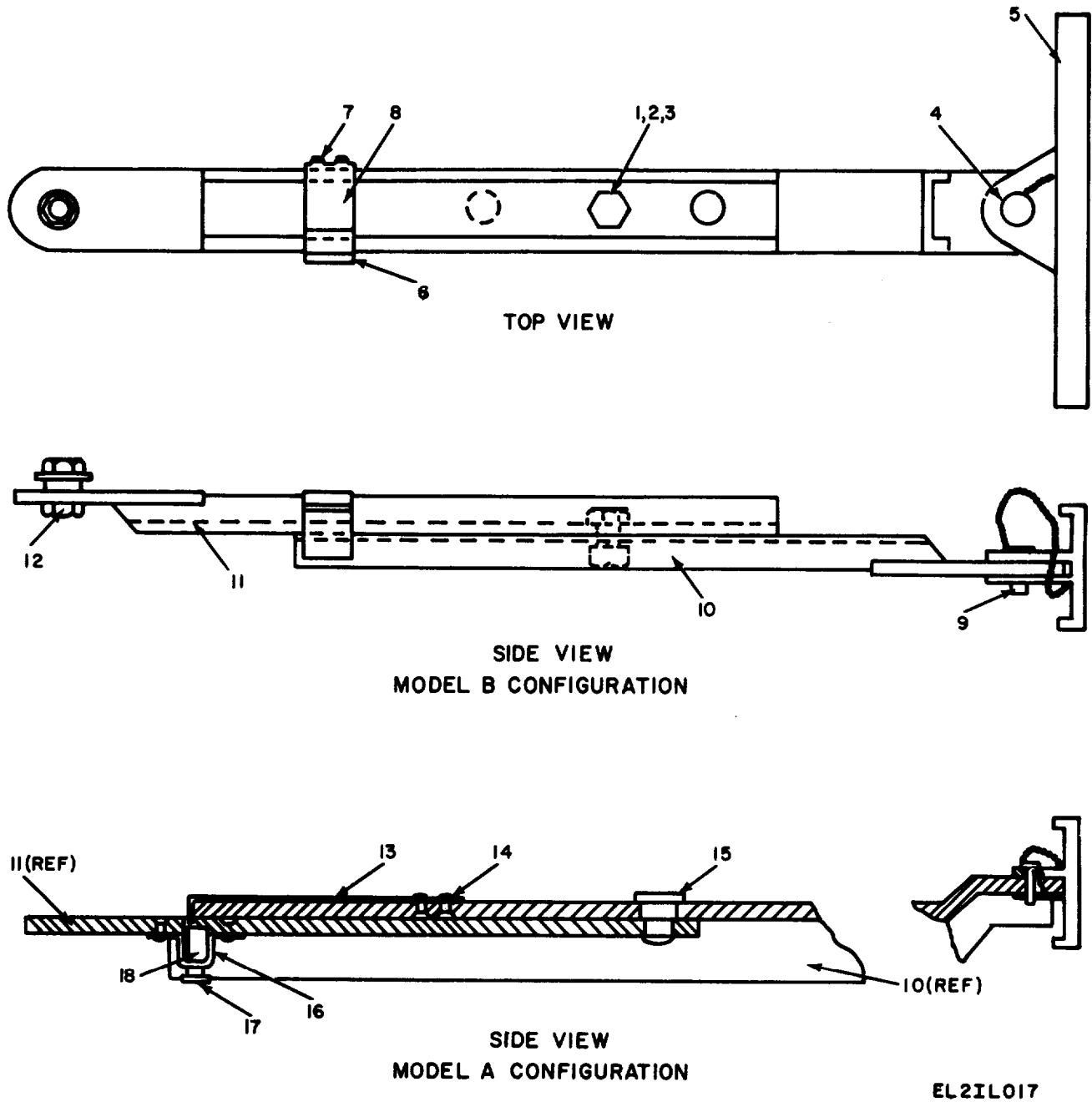


Figure 17. Door Assembly, Brace and Mounting Bracket.

| SECTION II | | TM11-5410-213-14P | | | | | | | |
|--------------|------|-------------------|------------------|---------------|-------------|------------------------|-----|------|---|
| (1) | (2) | (3) | (4) | (5) | (6) | | (7) | (8) | |
| ILLUSTRATION | | | | | | | | | |
| (A) | (B) | NATIONAL | | | DESCRIPTION | | | QTY | |
| FIG | ITEM | STOCK | PART | FSCM | | USABLE ON CODE | U/M | INC | |
| NO. | NO. | NUMBER | NUMBER | | | | | IN | |
| | | | | | | | | UNIT | |
| 17 | 1 | PAHZZ | 5305-00-891-9069 | SMB165488 | 80063 | SCREW, SHOULDER | BMC | EA | 1 |
| 17 | 2 | XDHZZ | | 52NTE066 | 72962 | NUT, HEXAGON, LOCKING | BMC | EA | 2 |
| 17 | 3 | PAHZZ | 5310-00-080-6004 | MS27183-14 | 96906 | WASHER, FLAT | BMC | EA | 2 |
| 17 | 4 | PAHZZ | 4010-00-436-3300 | SMB340027 | 80063 | CHAIN AND PIN ASSEMBLY | | EA | 1 |
| 17 | 5 | XDHZZ | | SMC340028 | 80063 | BRACKET, DOOR STUD | | EA | 1 |
| 17 | 6 | PAHZZ | 5340-00-307-1561 | SMB564738 | 80063 | CATCH | | EA | 1 |
| 17 | 7 | PAHZZ | 5305-00-984-4988 | MS35206-228 | 96906 | SCREW, MACHINE | BMC | EA | 2 |
| 17 | 8 | PAHZZ | 5360-00-302-9910 | SMB564737 | 80063 | SPRING | | EA | 1 |
| 17 | 9 | PAHZZ | 5315-00-839-2326 | MS24655-281 | 96906 | PIN, COTTER | | EA | 1 |
| 17 | 10 | XDHZZ | | SCC200157 | 80063 | BRACE ASSEMBLY | BMC | EA | 1 |
| 17 | 10 | XDHZZ | | SMC317081 | 80063 | BRACE, DOOR | 3MN | EA | 1 |
| 17 | 11 | XDHZZ | | SCC200158 | 80063 | BRACE ASSEMBLY | BMC | EA | 1 |
| 17 | 11 | XDHZZ | | SMC317054 | 80063 | BRACE, DOOR | 3MN | EA | 1 |
| 17 | 12 | PAHZZ | 5306-00-139-7381 | SMB564727-2 | 80063 | SCREW, SHOULDER | | EA | 1 |
| 17 | 13 | XDHZZ | | SMB555577 | 80063 | SPRING, LOCKING | 3MN | EA | 1 |
| 17 | 14 | PAHZZ | 5320-00-584-0672 | MS20426AD3-6 | 96906 | RIVET, FLAT HEAD | 3MN | EA | 4 |
| 17 | 15 | XDHZZ | | SMB555576 | 80063 | PIN, PIVOT | 3MN | EA | 1 |
| 17 | 16 | XDHZZ | | SMB555575 | 80063 | BRACKET | 3MN | EA | 1 |
| 17 | 17 | XDHZZ | | MS35222-64 | 96906 | SCREW, PAN HEAD | 3MN | EA | 1 |
| 17 | 18 | XDHZZ | | 8334-SS-10-32 | 6540 | STANDOFF | 3MN | EA | 1 |

NATIONAL STOCK NUMBER AND PART NUMBER INDEX

NOTE: LATEST NATIONAL STOCK NUMBER AND PART NUMBER ASSIGNMENTS ARE INCLUDED AT END OF INDEX

| STOCK NUMBER | FIGURE NO. | ITEM NO. | STOCK NUMBER | FIGURE NO. | ITEM NO. |
|------------------|------------|----------|------------------|------------|----------|
| 5365-00-001-1940 | 7 | 5 | 5365-00-263-9560 | 16 | 18 |
| 5365-00-001-1940 | 8 | 5 | 5305-00-267-8974 | 13 | 9 |
| 5365-00-001-1944 | 1 | 38 | 5325-00-281-8638 | 9 | 2 |
| 5365-00-001-1944 | 2 | 33 | 5410-00-290-8866 | 8 | 6 |
| 5365-00-001-4731 | 1 | 23 | 5310-00-301-4558 | 13 | 10 |
| 5365-00-001-4731 | 2 | 20 | 5310-00-301-4558 | 16 | 33 |
| 5365-00-001-4733 | 1 | 28 | | | |
| 5365-00-001-4733 | 2 | 23 | 5360-00-302-9910 | 17 | 8 |
| 5915-00-007-2526 | 10 | 4 | | | |
| | | | 5340-00-307-1561 | 17 | 6 |
| 5310-00-014-5847 | 12 | 9 | 5410-00-407-4953 | 1 | 1 |
| 5365-00-020-6591 | 1 | 30 | | | |
| 5365-00-020-6591 | 2 | 25 | 5410-00-407-4954 | 8 | 6 |
| 5305-00-021-3620 | 16 | 32 | 5410-00-407-4955 | 8 | 7 |
| 5305-00-021-3740 | 1 | 25 | 5320-00-408-9928 | 15 | 8 |
| 5305-00-021-3740 | 2 | 18 | 5310-00-413-4935 | 2 | 27 |
| 5365-00-024-6680 | 7 | 2 | 4030-00-431-5536 | 4 | 5 |
| 5999-00-025-9059 | 10 | 5 | 4010-00-436-3300 | 17 | 4 |
| 5365-00-037-8762 | 16 | 34 | | | |
| 5310-00-042-6759 | 7 | 11 | 5340-00-457-0579 | 4 | 13 |
| 5310-00-045-3296 | 13 | 15 | 5305-00-464-1740 | 4 | 10 |
| 5310-00-045-3299 | 9 | 10 | 5340-00-493-9235 | 13 | 1 |
| 5305-00-050-9230 | 16 | 25 | 5305-00-533-5446 | 14 | 2 |
| 5305-00-052-7436 | 15 | 2 | 5320-00-582-3276 | 13 | 2 |
| 5315-00-058-9720 | 11 | 1 | 5320-00-582-3304 | 1 | 9 |
| 5315-00-062-5417 | 16 | 40 | | | |
| | | | 5320-00-582-3304 | 6 | 5 |
| | | | | | |
| 5315-00-075-5828 | 16 | 7 | 5320-00-582-3304 | 13 | 6 |
| | | | 5320-00-582-3304 | 14 | 5 |
| 5310-00-080-6004 | 17 | 3 | 5320-00-582-3304 | 15 | 5 |
| 5310-00-081-4219 | 13 | 19 | 5320-00-582-3305 | 6 | 6 |
| 5310-00-088-0552 | 1 | 19 | 5320-00-582-3494 | 1 | 2 |
| 5310-00-088-0552 | 2 | 14 | 5310-00-582-5677 | 14 | 9 |
| 9330-00-107-1165 | 12 | 4 | 5320-00-584-0672 | 17 | 14 |
| 5410-00-107-1198 | 8 | 1 | 5306-00-584-4911 | 1 | 18 |
| 5410-00-107-4105 | 15 | 12 | 5306-00-584-4911 | 2 | 13 |
| | | | 5310-00-595-6057 | 1 | 29 |
| 5320-00-117-6853 | 6 | 2 | 5310-00-595-6057 | 2 | 17 |
| 5340-00-118-0018 | 12 | 2 | 5310-00-595-6057 | 7 | 17 |
| | | | 5310-00-595-6057 | 8 | 12 |
| 9320-00-134-9663 | 13 | 5 | 5310-00-595-6057 | 11 | 2 |
| 5999-00-136-5803 | 10 | 3 | | | |
| 5310-00-139-7357 | 3 | 4 | 5310-00-625-5756 | 13 | 19 |
| 5306-00-139-7381 | 17 | 12 | 5306-00-637-8062 | 15 | 3 |
| | | | 5310-00-637-9541 | 1 | 22 |
| 5340-00-143-0394 | 16 | 24 | 5310-00-637-9541 | 2 | 19 |
| | | | | | |
| 5310-00-145-2217 | 12 | 8 | 5306-00-637-9674 | 7 | 13 |
| 5365-00-163-2814 | 13 | 17 | 5306-00-637-9674 | 8 | 16 |
| | | | | | |
| 5365-00-163-2815 | 16 | 22 | 5306-00-655-6170 | 7 | 18 |
| 5315-00-168-2931 | 14 | 17 | 5306-00-655-6170 | 8 | 19 |
| 5365-00-168-6758 | 8 | 17 | 5340-00-682-1508 | 14 | 25 |
| 5365-00-168-6760 | 7 | 14 | 5340-00-682-1508 | 16 | 23 |
| 5365-00-168-6760 | 8 | 2 | | | |
| | | | 5305-00-702-4523 | 7 | 9 |
| 5365-00-168-6761 | 16 | 22 | 5305-00-702-4523 | 8 | 10 |
| 5365-00-168-6762 | 16 | 22 | 5305-00-717-5467 | 1 | 21 |
| | | | 5305-00-717-5467 | 2 | 24 |
| 5365-00-169-6052 | 13 | 17 | 5320-00-721-5385 | 2 | 3 |
| | | | | | |
| 5365-00-173-7010 | 16 | 21 | 5320-00-721-5386 | 3 | 1 |
| 5365-00-177-1927 | 13 | 17 | 5320-00-721-5387 | 2 | 2 |
| 5310-00-177-7674 | 8 | 20 | 5320-00-721-5387 | 3 | 1 |
| 5330-00-179-0303 | 12 | 11 | 5305-00-753-4451 | 1 | 37 |
| 5330-00-179-0305 | 15 | 6 | 5305-00-753-4451 | 2 | 32 |
| 5306-00-182-1512 | 13 | 18 | 5340-00-786-4798 | 16 | 12 |
| 5306-00-182-1513 | 13 | 18 | | | |
| 5310-00-183-4355 | 16 | 13 | 5340-00-793-1099 | 16 | 17 |
| 5305-00-207-8253 | 16 | 20 | 5340-00-794-4243 | 8 | 4 |
| 5305-00-208-1429 | 1 | 21 | | | |
| 5305-00-208-1429 | 2 | | 5340-00-794-4440 | 15 | 7 |
| 5340-00-229-5747 | 16 | 1 | 5340-00-794-4610 | 16 | 14 |
| 5410-00-231-6429 | 16 | 6 | | | |
| | | | 5340-00-794-4612 | 16 | 28 |
| 5365-00-235-0014 | 13 | 17 | 5310-00-802-4701 | 7 | 12 |
| 5330-00-248-3847 | 16 | 27 | 5310-00-802-4701 | 8 | 14 |
| 5305-00-253-5625 | 11 | 8 | 5310-00-807-1469 | 13 | 20 |

NATIONAL STOCK NUMBER AND PART NUMBER INDEX

| STOCK NUMBER | FIGURE NO. | ITEM NO. | STOCK NUMBER | FIGURE NO. | ITEM NO. | | |
|------------------|------------|----------|------------------|--------------|----------|----------|----------|
| 5310-00-809-4061 | 1 | 29 | 5410-00-933-0845 | 6 | 1 | | |
| 5310-00-809-4061 | 2 | 17 | 3940-00-933-4474 | 1 | 20 | | |
| 5310-00-809-8546 | 13 | 14 | 3940-00-933-4474 | 2 | 15 | | |
| 5320-00-813-4144 | 1 | 6 | | | | | |
| 5315-00-839-2326 | 17 | 9 | 4130-00-933-4477 | 9 | 5 | | |
| 5315-00-846-8337 | 16 | 38 | 5340-00-933-4512 | 7 | 6 | | |
| 5315-00-846-8337 | 16 | 41 | 4510-00-933-9953 | 5 | 1 | | |
| 3940-00-846-9858 | 4 | 1 | 5305-00-934-0196 | 1 | 33 | | |
| 5340-00-852-4506 | 16 | 16 | 5305-00-934-0196 | 2 | 28 | | |
| 5310-00-869-9576 | 16 | 26 | | | | | |
| 5320-00-874-4470 | 1 | 6 | 5310-00-934-9757 | 12 | 7 | | |
| | | | 5310-00-934-9758 | 13 | 16 | | |
| 5320-00-874-4471 | 1 | 2 | 5410-00-937-5248 | 10 | 2 | | |
| 5315-00-881-2253 | 9 | 7 | 5310-00-937-5949 | 7 | 15 | | |
| 5320-00-882-8385 | 15 | 11 | 5310-00-937-5949 | 8 | 18 | | |
| 5310-00-883-9417 | 16 | 31 | 5320-00-952-4159 | 3 | 1 | | |
| 5310-00-903-5966 | 14 | 10 | 5320-00-952-4159 | 13 | 6 | | |
| 5410-00-916-6082 | 9 | 18 | | | | | |
| 3990-00-916-6083 | 7 | 1 | 5320-00-952-4162 | 6 | 6 | | |
| 5330-00-916-6086 | 14 | 6 | 4030-00-956-5820 | 4 | 4 | | |
| 5340-00-917-6091 | 14 | 7 | 5315-00-957-2649 | 16 | 15 | | |
| 5340-00-917-6104 | 13 | 3 | 5320-00-957-3582 | 6 | 5 | | |
| 5410-00-919-4958 | 3 | 3 | 5340-00-973-2655 | 14 | 24 | | |
| 3040-00-919-5156 | 2 | 12 | 5310-00-974-6623 | 8 | 15 | | |
| 5340-00-928-8999 | 1 | 5 | 5340-00-974-9847 | 14 | 16 | | |
| | | | | | | | |
| 5340-00-928-8999 | 13 | 12 | 5305-00-984-4988 | 17 | 7 | | |
| 5310-00-929-6449 | 1 | 24 | 5310-00-984-7042 | 1 | 22 | | |
| 5310-00-929-6452 | 7 | 8 | 5310-00-984-7042 | 2 | 19 | | |
| 5310-00-929-6452 | 8 | 9 | 5305-00-984-7364 | 13 | 13 | | |
| | | | | | | | |
| PART NUMBER | FSCM | FIG. NO. | ITEM NO. | PART NUMBER | FSCM | FIG. NO. | ITEM NO. |
| AD45H | 7707 | 1 | 2 | MS20600AD4W2 | 96906 | 15 | 5 |
| AD66H | 7707 | 15 | 11 | MS20600AD4W3 | 96906 | 6 | 6 |
| AL4-575709-50 | 19220 | 3 | 5 | MS20600AD4W4 | 96906 | 1 | 2 |
| AL5624-52 | 19220 | 14 | 24 | MS20600AD6W4 | 96906 | 13 | 2 |
| AN101011 | 88044 | 15 | 3 | MS20600AD6W7 | 96906 | 1 | 6 |
| AN5-26A | 88044 | 14 | 8 | MS20600AD8W3 | 96906 | 3 | 1 |
| AN5C24A | 88044 | 13 | 18 | MS20600AD8W4 | 96906 | 3 | 1 |
| AN5C25A | 88044 | 13 | 18 | MS20600AD8W5 | 96906 | 2 | 3 |
| AN5C26A | 88044 | 13 | 21 | MS21042-5 | 96906 | 13 | 20 |
| AN7C22A | 88044 | 1 | 18 | MS21044N7 | 96906 | 1 | 19 |
| AN7C22A | 88044 | 2 | 13 | MS21318-46 | 96906 | 11 | 8 |
| AN960C616L | 88044 | 16 | 13 | MS21332-1 | 96906 | 9 | 2 |
| | | | | MS24617-54 | 96906 | 15 | 2 |
| BLDC4-09 | 84256 | 16 | 12 | MS24629-59 | 96906 | 14 | 3 |
| H945SS2RG | 98003 | 6 | 3 | MS24655-281 | 96906 | 17 | 9 |
| | | | | MS27183-12 | 96906 | 13 | 19 |
| MS15795-810 | 96906 | 14 | 9 | MS27183-14 | 96906 | 17 | 3 |
| MS15795-812 | 96906 | 13 | 19 | MS27183-15 | 96906 | 1 | 29 |
| MS15795-813 | 96906 | 7 | 12 | MS27183-15 | 96906 | 2 | 17 |
| MS15795-813 | 96906 | 8 | 14 | MS27183-8 | 96906 | 13 | 14 |
| MS15795-815 | 96906 | 1 | 29 | MS29513-115 | 96906 | 16 | 27 |
| MS15795-815 | 96906 | 2 | 17 | MS35206-228 | 96906 | 17 | 7 |
| MS15795-815 | 96906 | 7 | 17 | MS35208-67 | 96906 | 13 | 11 |
| MS15795-815 | 96906 | 8 | 12 | MS35222-64 | 96906 | 17 | 17 |
| MS15795-815 | 96906 | 11 | 2 | MS35223-45 | 96906 | 12 | 5 |
| MS16562-207 | 96906 | 11 | 1 | MS35233-46 | 96906 | 9 | 9 |
| MS16562-221 | 96906 | 9 | 7 | MS35307-306 | 96906 | 7 | 9 |
| MS16562-223 | 96906 | 16 | 3 | MS35307-306 | 96906 | 8 | 10 |
| MS171526 | 96906 | 16 | 8 | MS35307-307 | 96906 | 16 | 32 |
| MS171659 | 96906 | 16 | 38 | MS35307-308 | 96906 | 16 | 20 |
| MS171659 | 96906 | 16 | 41 | MS35307-336 | 96906 | 7 | 13 |
| MS17830-10C | 96906 | 16 | 9 | MS35307-336 | 96906 | 8 | 16 |
| MS17830-6C | 96906 | 7 | 10 | MS35307-338 | 96906 | 7 | 18 |
| MS20000AD8W-6 | 96906 | 2 | 6 | MS35307-338 | 96906 | 8 | 19 |
| | | | | MS35307-362 | 96906 | 1 | 21 |
| MS20392-5C23 | 96906 | 16 | 7 | MS35307-362 | 96906 | 2 | 24 |
| MS20392-5C33 | 96906 | 16 | 16 | MS35307-363 | 96906 | 1 | 21 |
| MS20426AD3-6 | 96906 | 17 | 14 | MS35307-363 | 96906 | 2 | 24 |
| MS20426AD6-8 | 96906 | 2 | 3 | MS35307-364 | 96906 | 1 | 25 |
| MS20427F4-5 | 96906 | 9 | 15 | MS35307-364 | 96906 | 2 | 18 |
| MS20470AD6-8 | 96906 | 6 | 2 | MS35307-378 | 96906 | 7 | 16 |
| MS20600AD4W2 | 96906 | 1 | 9 | MS35338-140 | 96906 | 8 | 15 |
| MS20600AD4W2 | 96906 | 6 | 5 | MS35338-141 | 96906 | 1 | 22 |
| MS20600AD4W2 | 96906 | 13 | 6 | MS35338-141 | 96906 | 2 | 19 |

NATIONAL STOCK NUMBER AND PART NUMBER INDEX

| PART NUMBER | FIG. NO. | ITEM NO. | PART NUMBER | FIG. NO. | ITEM NO. |
|---------------|----------|----------|-------------|--------------|-------------|
| MS35338-157 | 96906 | 16 | 26 | SMB162196-1 | 80063 8 17 |
| MS35338-158 | 96906 | 16 | 31 | SMB162197-1 | 80063 13 17 |
| MS35338-42 | 96906 | 9 | 10 | SMB162197-2 | 80063 13 17 |
| MS35338-43 | 96906 | 13 | 15 | SMB162197-3 | 80063 13 17 |
| MS35338-46 | 96906 | 1 | 22 | SMB162197-4 | 80063 13 17 |
| MS35338-46 | 96906 | 2 | 19 | SMB162200 | 80063 16 30 |
| MS35338-80 | 96906 | 12 | 6 | SMB162201 | 80063 8 13 |
| MS35338-83 | 96906 | 7 | 11 | SMB165303 | 80063 1 15 |
| MS35493-53 | 96906 | 14 | 2 | SMB165327 | 80063 14 14 |
| MS35493-53 | 96906 | 16 | 39 | SMB165331 | 80063 2 5 |
| MS35494-131 | 96906 | 5 | 2 | SMB165332 | 80063 2 1 |
| MS35495-1 | 96906 | 14 | 22 | SMB165334 | 80063 15 10 |
| | | | | SMB165337 | 80063 14 4 |
| | | | | SMB165364 | 80063 14 18 |
| MS35647-3 | 96906 | 14 | 25 | SMB165399 | 80063 2 4 |
| MS35647-3 | 96906 | 16 | 23 | SMB165452 | 80063 5 1 |
| MS35649-202 | 96906 | 13 | 16 | SMB165462 | 80063 1 20 |
| MS35649-282 | | | | SMB165462 | 80063 2 15 |
| MS35649-284 | 96906 | 9 | 11 | SMB165463 | 80063 1 12 |
| | 96906 | 12 | 7 | SMB165483-1 | 80063 1 28 |
| MS35674-41 | 96906 | 16 | 40 | SMB165483-1 | 80063 2 23 |
| MS35821-2A | 96906 | 9 | 12 | SMB165483-2 | 80063 1 30 |
| MS35914-149 | 96906 | 16 | 24 | SMB165483-2 | 80063 2 25 |
| MS35914-151 | 96906 | 16 | 16 | SMB165483-3 | 80063 1 23 |
| MS51021-42 | 96906 | 1 | 37 | SMB165483-3 | 80063 2 20 |
| MS51021-42 | 96906 | 2 | 32 | SMB165483-4 | 80063 1 27 |
| MS51957-64 | 96906 | 16 | 25 | SMB165483-4 | 80063 2 22 |
| MS51960-5 | 96906 | 9 | 17 | SMB165488 | 80063 17 1 |
| MS51971-1 | 96906 | 14 | 10 | SMB165496-2 | 80063 8 8 |
| MS90726-8 | 96906 | 13 | 9 | SMB317089 | 80063 1 10 |
| | | | | SMB340027 | 80063 17 4 |
| | | | | SMB340031 | 80063 1 11 |
| | | | | SMB450447 | 80063 12 2 |
| | | | | SMB450465 | 80063 13 4 |
| | | | | SMB555502 | 80063 7 1 |
| | | | | SMB555528GR2 | 80063 9 1 |
| SCB200143 | 80063 | 16 | 4 | SMB555547 | 80063 1 38 |
| SCB200144 | 80063 | 16 | 2 | SMB555547 | 80063 2 33 |
| SCB200145 | 80063 | 16 | 18 | SMB555555 | 80063 1 14 |
| SCB200146 | 80063 | 13 | 10 | SMB555564-1 | 80063 9 22 |
| SCB200146 | 80063 | 16 | 33 | SMB555564-2 | 80063 9 4 |
| SCB200150 | 80063 | 16 | 36 | SMB555568-1 | 80063 1 26 |
| SCB200151 | 80063 | 16 | 29 | SMB555568-1 | 80063 2 21 |
| SCB200153-1 | 80063 | 16 | 22 | SMB555568-2 | 80063 1 33 |
| SCB200153-2 | 80063 | 16 | 22 | SMB555568-2 | 80063 2 28 |
| SCB200153-4 | 80063 | 16 | 22 | SMB555568-3 | 80063 1 31 |
| SCB351474 | 80063 | 4 | 10 | SMB555568-3 | 80063 2 26 |
| SCB595073 | 80063 | 16 | 10 | SMB555570 | 80063 14 23 |
| | | | | SMB555572-6 | 80063 13 5 |
| | | | | SMB555573-1 | 80063 13 8 |
| SCC200135 | 80063 | 15 | 1 | SMB555573-2 | 80063 13 7 |
| SCC200139 | 80063 | 8 | 7 | SMB555575 | 80063 17 16 |
| SCC200141 | 80063 | 16 | 1 | SMB555576 | 80063 17 15 |
| SCC200142 | 80063 | 16 | 5 | SMB555577 | 80063 17 13 |
| SCC200154 | 80063 | 16 | 6 | SMB555582 | 80063 14 6 |
| SCC200156 | 80063 | 15 | 12 | SMB555583 | 80063 14 20 |
| SCC200157 | 80063 | 17 | 10 | SMB555584 | 80063 9 21 |
| SCC200158 | 80063 | 17 | 11 | SMB555595 | 80063 14 19 |
| SCC351470 | 80063 | 4 | 9 | SMB555598-1 | 80063 1 5 |
| SCC351471 | 80063 | 4 | 14 | SMB555598-1 | 80063 13 12 |
| SCC351472 | 80063 | 4 | 13 | SMB555598-2 | 80063 13 1 |
| SCC351473 | 80063 | 4 | 12 | SMB564670-3 | 80063 10 3 |
| SCC36424-5 | 80063 | 4 | 15 | SMB564670-4 | 80063 10 5 |
| SCC36424-6 | 80063 | 4 | 8 | SMB564727-2 | 80063 17 12 |
| SCC36424GRI | 80063 | 4 | 3 | SMB564737 | 80063 17 8 |
| SCC36424GRII | 80063 | 4 | 2 | SMB564738 | 80063 17 6 |
| SCC90674 | 80063 | 4 | 4 | SMB615259-1 | 80063 16 21 |
| SCC90676 | 80063 | 4 | 6 | SMB615259-2 | 80063 16 34 |
| SCD200138 | 80063 | 8 | 6 | SMC113597 | 80063 16 28 |
| SCD200140 | 80063 | 15 | 7 | SMC165382 | 80063 6 1 |
| SCD200140-8 | 80063 | 16 | 19 | SMC165383 | 80063 6 4 |
| SCD36423 | 80063 | 4 | 1 | SMC165466 | 80063 1 13 |
| SCD563202GRI | 80063 | 16 | 17 | SMC317054 | 80063 17 11 |
| SCD563202GRII | 80063 | 16 | 35 | SMC317057 | 80063 13 3 |
| SCD595499 | 80063 | 8 | 6 | SMC317063 | 80063 9 6 |
| SCD595500 | 80063 | 8 | 5 | SMC317064-2 | 80063 9 14 |
| SCD621052 | 80063 | 10 | 2 | SMC317064-3 | 80063 9 16 |
| SM-C-317069-2 | 80063 | 9 | 5 | SMC317081 | 80063 17 10 |
| SMB113596-1 | 80063 | 16 | 14 | SMC340028 | 80063 17 5 |
| SMB113604 | 80063 | 11 | 4 | SMC450441 | 80063 10 1 |

NATIONAL STOCK NUMBER AND PART NUMBER INDEX

| PART NUMBER | FSCM | FIG. NO. | ITEM NO. | PART NUMBER | FSCM | FIG. NO. | ITEM NO. |
|-----------------|-------|----------|----------|---------------|-------|----------|----------|
| SMC450441-3 | 80063 | 11 | 7 | SMD555519 | 80063 | 9 | 18 |
| SMC450443 | 80063 | 15 | 9 | SMD555528-3 | 80063 | 9 | 20 |
| SMC450466 | 80063 | 12 | 4 | SMD555531 | 80063 | 1 | 1 |
| SMC450478 | 80063 | 10 | 4 | SMD555531-3 | 80063 | 13 | 4 |
| SMC555515-1 | 80063 | 7 | 6 | SMD555535 | 80063 | 14 | 7 |
| SMC555515-2 | 80063 | 7 | 7 | SMD555535-1 | 80063 | 14 | 15 |
| SMC555515-2 | 80063 | 8 | 3 | SMD555535-2 | 80063 | 14 | 12 |
| SMC555515-3 | 80063 | 8 | 4 | SMD555536-1 | 80063 | 1 | 35 |
| SMC555517 | 80063 | 7 | 4 | SMD555536-2 | 80063 | 1 | 4 |
| SMC555529 | 80063 | 9 | 13 | SMD555536-3 | 80063 | 2 | 30 |
| SMC555540 | 80063 | 1 | 39 | SMD555536-4 | 80063 | 2 | 8 |
| SMC555548 | 80063 | 1 | 36 | SMD555537GRI | 80063 | 1 | 34 |
| SMC555548 | 80063 | 2 | 31 | SMD555537GRII | 80063 | 1 | 3 |
| SMC555549 | 80063 | 7 | 14 | SMD555537GR3 | 80063 | 2 | 29 |
| SMC555549 | 80063 | 8 | 2 | SMD555537GR4 | 80063 | 2 | 7 |
| SMC555565GRI | 80063 | 14 | 13 | SMD555567 | 80063 | 3 | 2 |
| SMC555565GR2 | 80063 | 14 | 21 | SMD615264 | 80063 | 12 | 3 |
| SMC564811 | 80063 | 15 | 4 | S10B216 | 3481 | 8 | 20 |
| SMC564839-106IN | 80063 | 12 | 10 | S10B80 | 3481 | 9 | 3 |
| SMC564839-205IN | 80063 | 15 | 6 | S25B211 | 3481 | 7 | 8 |
| SMC564839-96IN | 80063 | 12 | 11 | S25B211 | 3481 | 8 | 9 |
| SMC615255 | 80063 | 16 | 37 | S31B275 | 3481 | 7 | 19 |
| SMC615263 | 80063 | 11 | 5 | S31B275 | 3481 | 8 | 20 |
| SMD162194 | 80063 | 8 | 1 | S31B500 | 83187 | 7 | 15 |
| SMD317071 | 80063 | 14 | 1 | S31B500 | 83187 | 8 | 18 |
| SMD317072 | 80063 | 9 | 19 | S37B115 | 3481 | 1 | 32 |
| SMD317073 | 80063 | 9 | 8 | S37B115 | 3481 | 2 | 27 |
| SMD317078 | 80063 | 7 | 3 | S37B285 | 3481 | 1 | 24 |
| SMD317087-1 | 80063 | 2 | 12 | S37B285 | 3481 | 2 | 16 |
| SMD317087-2 | 80063 | 2 | 10 | 1-575709-50 | 19220 | 3 | 3 |
| SMD317087-3 | 80063 | 1 | 8 | 101-1-4-31 | 2751 | 12 | 8 |
| SMD317087-4 | 80063 | 1 | 17 | 15949 | 19220 | 3 | 4 |
| SMD317088GRI | 80063 | 2 | 11 | 2INTU040 | 72962 | 12 | 9 |
| SMD317088GRII | 80063 | 2 | 9 | 27X405C | 19220 | 14 | 17 |
| SMD317088GRIII | 80063 | 1 | 7 | 28-1C | 76691 | 4 | 5 |
| SMD317088GRIV | 80063 | 1 | 16 | 28-23H5 | 76691 | 4 | 7 |
| SMD450461 | 80063 | 1 | 1 | 5100-35H | 79136 | 11 | 3 |
| SMD450462 | 80063 | 12 | 1 | 52NTE066 | 72962 | 17 | 2 |
| SMD450462-10 | 80063 | 12 | 5 | 52413 | 84256 | 16 | 11 |
| SMD555503-1 | 80063 | 7 | 2 | 79NE066 | 72962 | 8 | 11 |
| SMD555503-2 | 80063 | 7 | 5 | 8334-SS-10-32 | 6540 | 17 | 18 |
| | | | | 914361 | 83205 | 3 | 5 |

LATEST NATIONAL STOCK NUMBER ASSIGNMENTS

| STOCK NUMBER | FIG. NO. | ITEM NO. | STOCK NUMBER | FIG. NO. | ITEM NO. |
|------------------|----------|----------|------------------|----------|----------|
| 5310-00-050-6646 | 7 | 10 | 3040-00-919-5049 | 2 | 8 |
| 5305-00-052-6923 | 14 | 3 | 3040-00-919-5154 | 1 | 4 |
| 5320-00-117-7288 | 2 | 3 | 5410-00-927-1197 | 2 | 34 |
| 5305-00-151-2617 | 14 | 8 | 5340-00-928-8998 | 8 | 3 |
| 5306-00-182-1514 | 13 | 21 | 5410-00-933-0849 | 2 | 9 |
| 5320-00-243-3933 | 9 | 15 | 2540-00-933-4064 | 2 | 7 |
| 5410-00-403-9535 | 4 | 2 | 5315-00-933-4976 | 1 | 36 |
| 5310-00-406-7240 | 16 | 9 | 5315-00-933-4976 | 2 | 31 |
| 5310-00-413-4935 | 1 | 32 | 5310-00-933-8119 | 12 | 6 |
| 4030-00-445-6210 | 4 | 7 | 5310-00-933-8121 | 14 | 11 |
| 5305-00-533-5446 | 16 | 39 | 5305-00-934-0198 | 1 | 26 |
| 5340-00-709-9814 | 9 | 12 | 5310-00-934-9759 | 9 | 11 |
| 5310-00-721-5414 | 2 | 16 | 2540-00-937-0325 | 1 | 34 |
| 5305-00-725-4197 | 9 | 17 | 2540-00-937-0326 | 1 | 3 |
| 5310-00-726-7700 | 8 | 11 | 5340-00-937-1597 | 2 | 10 |
| 5365-00-804-7642 | 11 | 3 | 5305-00-938-4012 | 1 | 31 |
| 5315-00-826-3251 | 16 | 3 | 5305-00-938-4012 | 2 | 26 |
| 5340-00-836-1938 | 6 | 3 | 5305-00-946-2371 | 14 | 18 |
| 2540-00-914-8962 | 1 | 16 | 5305-00-964-0636 | 7 | 16 |
| 2540-00-916-6080 | 2 | 9 | 5305-00-984-6193 | 12 | 5 |
| 5330-00-917-6093 | 9 | 22 | 5310-00-987-9070 | 7 | 19 |
| 5340-00-917-6103 | 14 | 15 | 5310-00-987-9070 | 8 | 20 |
| 3040-00-919-5001 | 1 | 17 | | | |

NATIONAL STOCK NUMBER AND PART NUMBER INDEX
 LATEST PART NUMBER ASSIGNMENTS

| PART NUMBER | FSCM | FIG. NO. | ITEM NO. | PART NUMBER | FSCM | FIG. NO. | ITEM NO. |
|--------------|-------|----------|----------|-------------|-------|----------|----------|
| AD43S | 7707 | 6 | 6 | MS21044N7 | 96906 | 2 | 14 |
| AD64S | 7707 | 3 | 1 | MS35206-273 | 96906 | 13 | 13 |
| AD64S | 7707 | 13 | 6 | MS35338-139 | 96906 | 14 | 11 |
| AD68ABS | 7707 | 15 | 8 | SMC555540 | 80063 | 2 | 34 |
| AD68H | 7707 | 1 | 6 | SMD555503-1 | 80063 | 8 | 5 |
| AL15818 | 19200 | 14 | 16 | SMB555503-2 | 80063 | 8 | 5 |
| MS20600AD8W3 | 96906 | 2 | 2 | 13ANOFFSET | 70892 | 11 | 6 |

ADDITIONAL LATEST NATIONAL STOCK NUMBER ASSIGNMENTS

ADDITIONAL LATEST PART NUMBER ASSIGNMENTS

| STOCK NUMBER | FIGURE NO. | ITEM NO. | PART NUMBER | FSCM | FIG. NO. | ITEM NO. |
|------------------|------------|----------|-------------|-------|----------|----------|
| 5305-00-014-9247 | 5 | 2 | | | | |
| 5330-00-179-0304 | 12 | 10 | MS21044C04 | 96906 | 4 | 11 |
| 5305-00-533-5446 | 13 | 11 | MS35493-53 | 96906 | 13 | 11 |
| 5340-00-794-4595 | 16 | 35 | MS35649-282 | 96906 | 12 | 7 |
| 5305-00-891-9069 | 17 | 1 | | | | |
| 5310-00-917-9916 | 14 | 19 | | | | |
| 5340-00-928-8998 | 7 | 7 | | | | |
| 5330-00-931-8224 | 9 | 4 | | | | |
| 5330-00-933-4514 | 9 | 21 | | | | |
| 5305-00-934-0198 | 2 | 21 | | | | |
| 5310-00-934-9757 | 12 | 7 | | | | |
| 5305-00-934-9906 | 14 | 23 | | | | |
| 5310-00-982-4999 | 4 | 11 | | | | |
| 5310-00-982-4999 | 16 | 8 | | | | |

APPENDIX C

MAINTENANCE ALLOCATION

Section 1. INTRODUCTION

C-1. General

This appendix provides a summary of the maintenance operations for . It authorizes categories of maintenance for specific maintenance functions on repairable items and components and the tools and equipment required to perform each function. This appendix may be used as an aid in planning maintenance operations.

C-2. Maintenance Function

Maintenance functions will be limited to and defined as follows:

a. Inspect. To determine the serviceability of an item by comparing its physical, mechanical, and/or electrical characteristics with established standards through examination.

b. Test. To verify serviceability and to detect incipient failure by measuring the mechanical or electrical characteristics of an item and comparing those characteristics with prescribed standards.

c. Service. Operations required periodically to keep an item in proper operating condition, i.e., to clean (decontaminate), to preserve, to drain, to paint, or to replenish fuel, lubricants, hydraulic fluids, or compressed air supplies.

d. Adjust. To maintain, within prescribed limits, by bringing into proper or exact position, or by setting the operating characteristics to the specified parameters.

e. Align. To adjust specified variable elements of an item to bring about optimum or desired performance.

f. Calibrate. To determine and cause corrections to be made or to be adjusted on instruments or test measuring and diagnostic equipments used in precision measurement. Consists of comparisons of two instruments, one of which is a certified standard of known accuracy, to detect and adjust any discrepancy in the accuracy of the instrument being compared.

g. Install. The act of emplacing, seating, or fixing into position an item, part, module (component or assembly) in a manner to allow the proper functioning of the equipment or system.

h. Replace. The act of substituting a serviceable like type part, subassembly, or module (component or assembly) for an unserviceable counterpart.

i. Repair. The application of maintenance services (inspect, test, service, adjust, align, calibrate, replace) or other maintenance actions (welding, grinding, riveting, straightening, facing, remachining, or resurfacing) to restore serviceability to an item by correcting specific damage, fault, malfunction, or failure in a part, subassembly, module (component or assembly), end item, or system.

j. Overhaul. That maintenance effort (service/action) necessary to restore an item to a completely serviceable/operational condition as prescribed by maintenance standards (i.e., DMWR) in appropriate technical publications. Overhaul is normally the highest degree of maintenance performed by the Army. Overhaul does not normally return an item to like new condition.

k. Rebuild. Consists of those services/actions necessary for the restoration of unserviceable equipment to a like new condition in accordance with original manufacturing standards. Rebuild is the highest degree of materiel maintenance applied to Army equipment. The rebuild operation includes the act of returning to zero those age measurements (hours, miles, etc.) considered in classifying Army equipments/components.

C-3. Column Entries

a. Column 1, Group Number. Column 1 lists group numbers, the purpose of which is to identify components, assemblies, subassemblies, and modules with the next higher assembly.

b. Column 2, Component/Assembly. Column 2 contains the noun names of components, assemblies, subassemblies, and modules for which maintenance is authorized.

c. Column 3, Maintenance Functions. Column 3 lists the functions to be performed on the item listed in column 2. When items are listed without maintenance functions, it is solely for purpose of having the group numbers in the MAC and RPSTL coincide.

d. Column 4, Maintenance Category. Column 4 specifies, by the listing of a "work time" figure in the appropriate subcolumn (s), the lowest level of maintenance authorized to perform the function listed in column 3. This figure represents the active

time required to perform that maintenance function at the indicated category of maintenance. If the number or complexity of the tasks within the listed maintenance function vary at different maintenance categories, appropriate "work time" figures will be shown for each category. The number of task-hours specified by the "work time" figure represents the average time required to restore an item (assembly, subassembly, component, module, end item or system) to a serviceable condition under typical field operating conditions. This time includes preparation time, troubleshooting time and quality assurance/quality control time in addition to the time required to perform the specific tasks identified for the maintenance functions authorized in the maintenance allocation chart. Subcolumns of column 4 areas follows:

- C-Operator/Crew
- O-Organizational
- F-Direct Support
- H-General Support
- D-Depot

e. Column 5, Tools and Equipment. Column 5 specifies by code those common tools sets (not individual tools) and special tools, test, and support equipment required to perform the designated function.

f. Column 6, Remarks. Column 6 contains an alphabetic code which leads to the remark in section IV, Remarks, which is pertinent to the item op

posite the particular code.

C-4. Tool and Test Equipment Requirements (Sec. III)

a. Tool or Test Equipment Reference Code. The numbers in this column coincide with the numbers used in the tools and equipment column of the MAC. The numbers indicate the applicable tool or test equipment for the maintenance functions.

b. Maintenance Category. The codes in this column indicate the maintenance category allocated the tool or test equipment.

c. Nomenclature. This column lists the noun name and nomenclature of the tools and test equipment required to perform the maintenance functions,

d. National/NATO Stock Number. This column lists the National/NATO stock number of the specific tool or test equipment.

e. Tool Number. This column lists the manufacturer's part number of the tool followed by the Federal Supply Code for manufacturers (5-digit) in parentheses.

C-5. Remarks (Sec. IV)

a. Reference Code. This code refers to the appropriate item in section II, column 6.

b. Remarks. This column provides the required explanatory information necessary to clarify items appearing in section II.

(Next printed page is 51.)

SECTION II MAINTENANCE ALLOCATION CHART

TM11-5410-213-14P

FOR
SHELTERS, ELECTRICAL EQUIPMENT S-280A/G AND S-280B/G

| (1) GROUP NUMBER | (2) COMPONENT/ASSEMBLY | (3) MAINTENANCE FUNCTION | (4) MAINTENANCE CATEGORY | | | | | (5) TOOLS AND EQPT. | (6) REMARKS |
|------------------------|--|--------------------------------|-----------------------------|-----|-----|-----|-------|------------------------------|----------------|
| | | | C | O | F | H | D | | |
| 00 | SHELTERS, ELECTRICAL EQUIPMENT S-280A/G AND S-280B/G | Inspect | | 0.5 | | | | | A |
| | | Service | | 0.5 | | | | | B |
| | | Replace | | | | 1.0 | | | |
| | | Repair | | 1.0 | | | | 3,6 | C |
| | | Repair | | | 1.0 | 1.0 | | 1,4 | |
| | | Repair | | | | | | 1,2,5 | |
| 01 | DOOR ASSEMBLY | Overhaul | | | | | 5.0 | | D |
| | | Rebuild | | | | | 10.0 | | D |
| | | Inspect | | 0.2 | | | | | A |
| | | Service | | 0.2 | | | | | B |
| | | Replace | | | 1.0 | | | 1 | |
| | | Repair | | 0.5 | | 2.0 | | 3,6 | E |
| | | Repair | | | | | 1,2,5 | | |

SECTION III TOOL AND TEST EQUIPMENT REQUIREMENTS
FOR
SHELTERS, ELECTRICAL EQUIPMENT S-280A/G AND S-280B/G

| TOOL OR TEST EQUIPMENT REF CODE | MAINTENANCE CATEGORY | NOMENCLATURE | NATIONAL/NATO STOCK NUMBER | TOOL NUMBER |
|---------------------------------------|-------------------------|---|-------------------------------|-------------|
| 1 | F,H,D | TOOL KIT, AUTOMOTIVE MECHANICS | 5180-00-754-0641 | |
| 2 | H,D | TOOL KIT, ELECTRONIC EQUIPMENT SHELTER TK-144/G | 5180-00-973-4369 | |
| 3 | 0 | REPAIR KIT, ELECTRIC MK-680/G | 5410-00-793-2021 | |
| 4 | F | REPAIR KIT, ELECTRIC MK-681/G | | |
| 5 | H | MAINTENANCE KIT, ELECTRONIC EQUIPMENT MK-679/G | 5410-00-973-2936 | |
| 6 | 0 | TOOLS AVIALABLE TO OPERATOR AND ORGANIZATIONAL MAINTENANCE PERSONNEL | | |

SECTION IV. REMARKS

TM-11-5410-213-14P

| REFERENCE CODE | REMARKS |
|-------------------|--|
| A | VISUAL INSPECTION |
| B | PREVENTIVE MAINTENANCE |
| C | BY REPLACEMENT OF LIFTING AND TIE DOWN SLING ASSEMBLY PIECE PARTS, DRAIN PLUG AND ATTACHING HARWARE: MINOR SHELTER SKIN REPAIR |
| D | DEPOT FACILITIES |
| E | BY REPLACEMENT OF AIR FILTERS AND PADLOCK: MINOR SKIN REPAIR OF DOOR ASSEMBLY |

RECOMMENDED CHANGES TO EQUIPMENT TECHNICAL MANUALS



SOMETHING WRONG WITH THIS MANUAL?

THEN...JOT DOWN THE DOPE ABOUT IT ON THIS FORM, TEAR IT OUT, FOLD IT AND DROP IT IN THE MAIL!

FROM: (YOUR UNIT'S COMPLETE ADDRESS)

Commander
Stateside Army Depot
ATTN: AMSTA-US
Stateside, N.J. 07703

DATE 10 July 1975

PUBLICATION NUMBER

TM 11-5840-340-12

DATE

23 Jan 74

TITLE

Radar Set AN/SPC-76

BE EXACT...PIN-POINT WHERE IT IS

IN THIS SPACE TELL WHAT IS WRONG AND WHAT SHOULD BE DONE ABOUT IT:

| PAGE NO. | PARA-GRAPH | FIGURE NO. | TABLE NO. |
|----------|------------|------------|-----------|
| 2-25 | 2-28 | | |
| 3-10 | 3-3 | | 3-1 |
| 5-6 | 5-8 | | |
| | | F03 | |

Recommend that the installation antenna alignment procedure be changed throughout to specify a 2° IFF antenna lag rather than 1°.

REASON: Experience has shown that with only a 1° lag, the antenna servo system is too sensitive to wind gusting in excess of 27 knots, and has a tendency to rapidly accelerate and decelerate as it hunts, causing strain to the drive train. Hunting is minimized by adjusting the lag to 2° without degradation of operation.

Item 5, Function column. Change "2 db" to "3db."

REASON: The adjustment procedure for the TRANS POWER FAULT indicator calls for a 3 db (500 watts) adjustment to light the TRANS POWER FAULT indicator.

Add new step f.1 to read, "Replace cover plate removed in step e.1, above."

REASON: To replace the cover plate.

Zone C 3. On J1-2, change "+24 VDC to "+5 VDC."

REASON: This is the output line of the 5 VDC power supply. + 24 VDC is the input voltage.

TYPED NAME, GRADE OR TITLE, AND TELEPHONE NUMBER

SSG I. M. DeSpirito 999-1776

SIGN HERE:

SSG I. M. DeSpirito

DA FORM 2028-2 (TEST) 1 AUG 74

P.S.--IF YOUR OUTFIT WANTS TO KNOW ABOUT YOUR MANUAL "FIND," MAKE A CARBON COPY OF THIS AND GIVE IT TO YOUR HEADQUARTERS.

HISA 1686-75

TEAR ALONG DOTTED LINE

RECOMMENDED CHANGES TO EQUIPMENT TECHNICAL MANUALS



SOMETHING WRONG WITH THIS MANUAL?

THEN... JOT DOWN THE DOPE ABOUT IT ON THIS FORM, TEAR IT OUT, FOLD IT AND DROP IT IN THE MAIL!

FROM: (YOUR UNIT'S COMPLETE ADDRESS)

DATE

PUBLICATION NUMBER

TM 11-5410-213-14P

DATE

21 ~~6~~ 78

TITLE

BE EXACT... PIN-POINT WHERE IT IS

IN THIS SPACE TELL WHAT IS WRONG AND WHAT SHOULD BE DONE ABOUT IT:

PAGE NO.

PARA-GRAPH

FIGURE NO.

TABLE NO.

TEAR ALONG DOTTED LINE

TYPED NAME, GRADE OR TITLE, AND TELEPHONE NUMBER

SIGN HERE:

DA FORM 2028-2 (TEST)
1 AUG 74

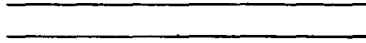
P.S.--IF YOUR OUTFIT WANTS TO KNOW ABOUT YOUR MANUAL "FIND," MAKE A CARBON COPY OF THIS AND GIVE IT TO YOUR HEADQUARTERS.

FILL IN YOUR
UNIT'S ADDRESS



FOLD BACK

DEPARTMENT OF THE ARMY



OFFICIAL BUSINESS

Commander
US Army Communications and Electronics
Materiel Readiness Command
ATTN: DRSEL-MA-Q
Fort Monmouth, NJ 07703

FOLD BACK

TEAR ALONG DOTTED LINE

RECOMMENDED CHANGES TO EQUIPMENT TECHNICAL MANUALS



SOMETHING WRONG WITH THIS MANUAL?

THEN... JOT DOWN THE DOPE ABOUT IT ON THIS FORM, TEAR IT OUT, FOLD IT AND DROP IT IN THE MAIL!

FROM: (YOUR UNIT'S COMPLETE ADDRESS)

DATE

PUBLICATION NUMBER

TM 11-5410-213-24P

DATE

21 ~~SEP~~ 78

TITLE

BE EXACT... PIN-POINT WHERE IT IS

IN THIS SPACE TELL WHAT IS WRONG AND WHAT SHOULD BE DONE ABOUT IT:

PAGE NO.

PARA-GRAPH

FIGURE NO.

TABLE NO.

TEAR ALONG DOTTED LINE

TYPED NAME, GRADE OR TITLE, AND TELEPHONE NUMBER

SIGN HERE:

FILL IN YOUR
UNIT'S ADDRESS

FOLD BACK

DEPARTMENT OF THE ARMY

OFFICIAL BUSINESS

Commander
US Army Communications and Electronics
Materiel Readiness Command
ATTN: DRSEL-MA-Q
Fort Monmouth, NJ 07703

FOLD BACK

TEAR ALONG DOTTED LINE

RECOMMENDED CHANGES TO EQUIPMENT TECHNICAL MANUALS



SOMETHING WRONG WITH THIS MANUAL?

THEN... JOT DOWN THE DOPE ABOUT IT ON THIS FORM, TEAR IT OUT, FOLD IT AND DROP IT IN THE MAIL!

FROM: (YOUR UNIT'S COMPLETE ADDRESS)

DATE

PUBLICATION NUMBER

TM 11-5410-213-24P

DATE

21 ~~Nov~~ 78

TITLE

BE EXACT... PIN-POINT WHERE IT IS

IN THIS SPACE TELL WHAT IS WRONG AND WHAT SHOULD BE DONE ABOUT IT:

PAGE NO.

PARA-GRAPH

FIGURE NO.

TABLE NO.

TEAR ALONG DOTTED LINE

TYPED NAME, GRADE OR TITLE, AND TELEPHONE NUMBER

SIGN HERE:

FILL IN YOUR
UNIT'S ADDRESS

FOLD BACK

DEPARTMENT OF THE ARMY

OFFICIAL BUSINESS

Commander
US Army Communications and Electronics
Materiel Readiness Command
ATTN: DRSEL-MA-Q
Fort Monmouth, NJ 07703

FOLD BACK

TEAR ALONG DOTTED LINE

By Order of the Secretary of the Army:

BERNARD W. ROGERS
 General United States Army
 Chief of Staff

Official

J.C. PENNINGTON
Brigadier United States Army
The Adjutant General

Distribution:

| | |
|---------------------------------|----------------|
| Active Army: | 6-200 |
| | 6-201 |
| HISA (Ft Monmouth) (33) | 6-615 |
| USAINSCOM (2) | 6-617 |
| COE (1) | 7 |
| TSG (1) | 11-35 |
| USAARENBD (1) | 11-45 |
| DARCOM (1) | 11-46 |
| TRADOC (2) | 11-85 |
| OS Maj Comd (4) | 11-86 |
| TECOM (2) | 11-95 |
| USACC (4) | 11-97 |
| MDW (1) | 11-98 |
| Armies (2) | 11-116 |
| Corps (2) | 11-117 |
| Svc Colleges (1) | 11-122 |
| USAIGS (5) | 11-137 |
| USAADS (2) | 11-327 |
| USAFAS (2) | 11-347 |
| USAARMS (2) | 11-357 |
| USAIS (2) | 11-377 |
| USAES (2) | 11-500 (AA-AC) |
| USAICS (3) | 17 |
| MAAG (1) | 29-1 |
| USARMIS (1) | 29-11 |
| USAERDAA (1) | 29-15 |
| USAERDAW (1) | 29-51 |
| USAEPG (2) | 29-25 |
| Army Dep (1) except | 29-35 |
| Fort Carson (5) | 29-41 |
| Fort Gillem (10) | 29-51 |
| Fort Gordon (10) | 29-55 |
| Fort Huachuca (10) | 29-85 |
| Ft. Richardson (ECOM Ofc) (2) | 29-86 |
| LBAD (14) | 29-87 |
| SAAD (30) | 29-134 |
| TOAD (14) | 29-136 |
| SHAD (3) | 31-105 |
| USA Dep (1) | 31-106 |
| Sig Sec USA Dep (1) | 32-52 |
| | 32-56 |
| | 32-57 |
| Units org under fol TOE: | 32-78 |
| 1-128 | 32-500 |
| 1-207 | 37 |
| 5-115 | 55-89 |
| 5-116 | 55-99 |
| | 57 |

NG: None

USAR: None

For explanation of abbreviations used see, AR 310-50

